

QUICK START GUIDE

PARTYBOX ENCORE2

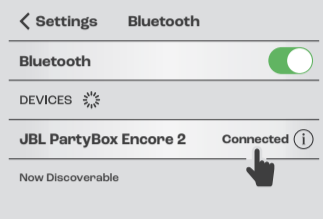


WHAT'S IN THE BOX

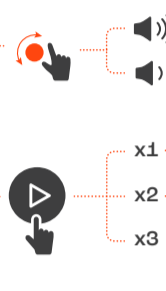


*Power cord quantity and plug type vary by regions.
**The quantity of microphones and microphone holders varies by regions.

BLUETOOTH PAIRING



PLAY

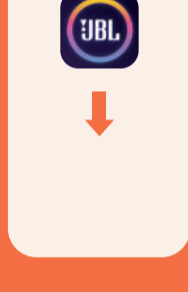


LIGHTSHOW



Apply lightshow presets and more with the JBL PARTYBOX app.

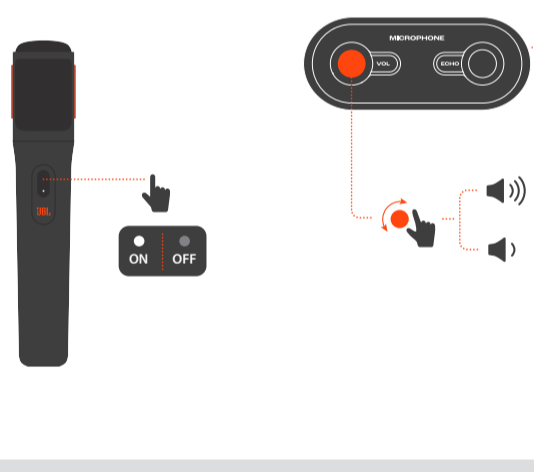
APP



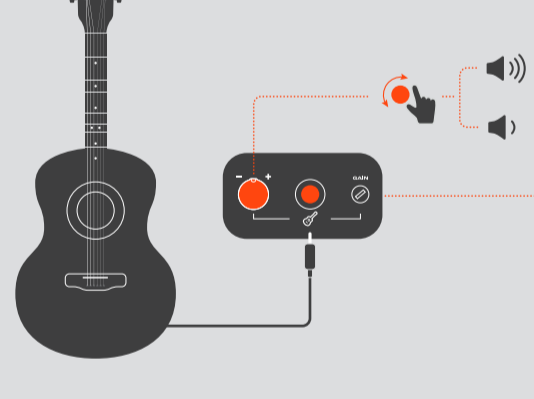
Download and install the JBL PARTYBOX app to get more from the product.



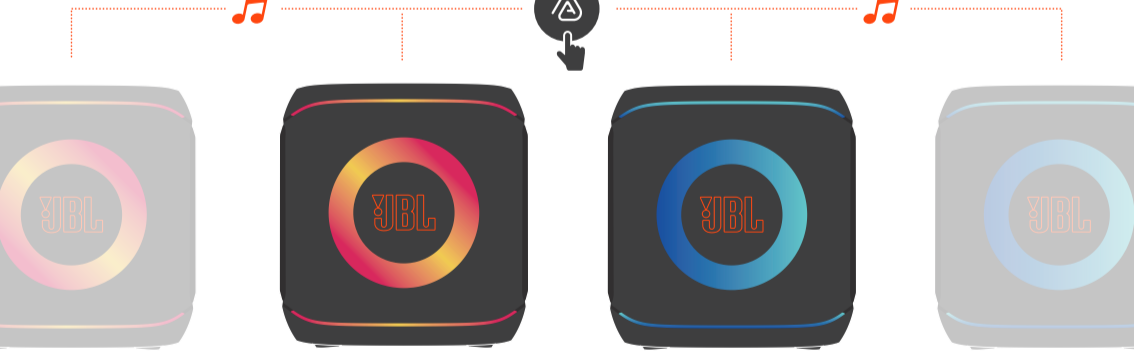
MICROPHONE



GUITAR



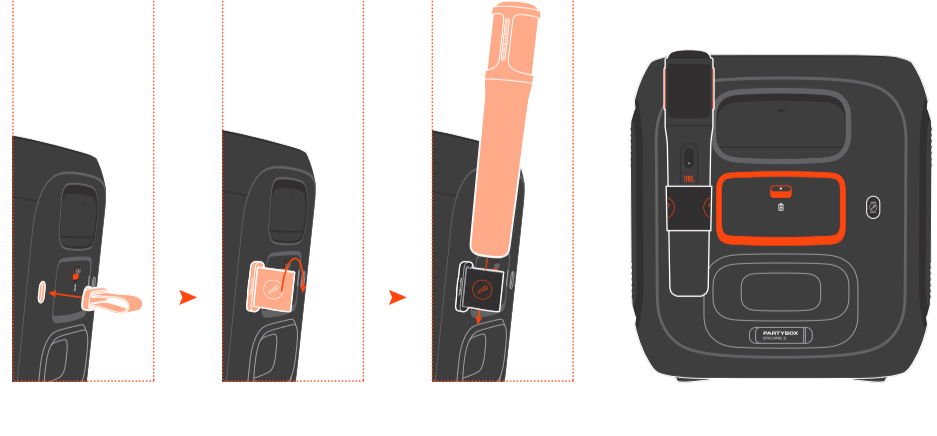
MULTI-SPEAKER CONNECTION



CHARGING



MICROPHONE HOLDER



BATTERY REPLACEMENT

1 Remove the Old Battery



2 Insert the New Battery



Change the battery before first use.

