



**We love that you are rocking JLab!**  
**We take pride in our products and fully stand behind them.**

PLAY PRO GAMING  
 WIRELESS HEADSET



**YOUR WARRANTY**

All warranty claims are subject to JLab authorization and at our sole discretion. Retain your proof of purchase to ensure warranty coverage.



**CONTACT US**

Reach out to us at [support@jlab.com](mailto:support@jlab.com) or visit [jlab.com/contact](http://jlab.com/contact)

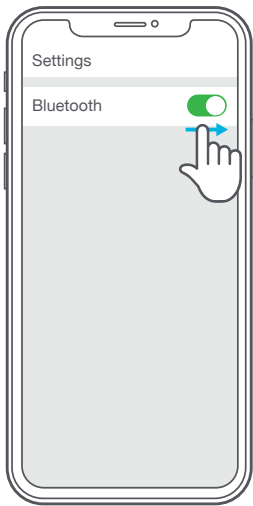
**REGISTER TODAY**

[jlab.com/register](http://jlab.com/register)

[Product updates](#) | [How-to tips](#)  
[FAQs & more](#)

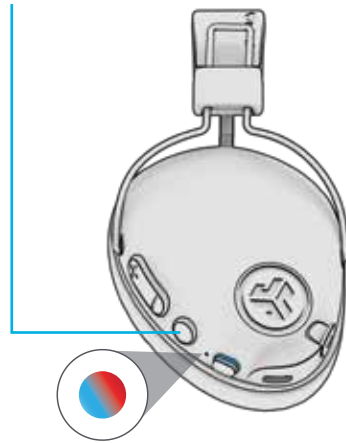
**FIRST TIME SETUP: BLUETOOTH PAIRING**

- 1 Turn on the Bluetooth in your device settings.

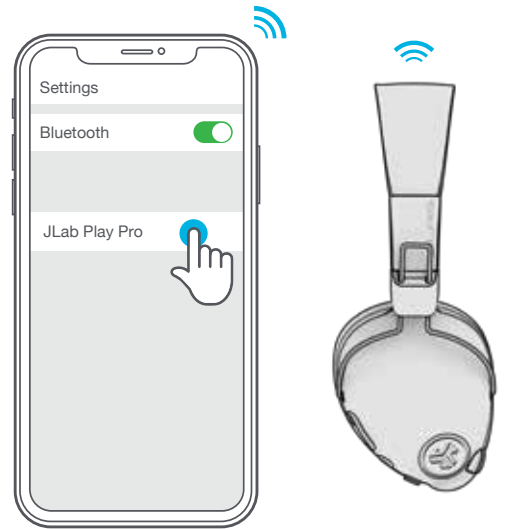


- 2 When the Play Pro Wireless Headphones are powered off, press and hold the Power Button for approximately 8 seconds.

**Fast blinking red and blue light** indicates searching for Bluetooth device.



- 3 Select "JLab Play Pro" in your device settings to connect.



**PAIRING NEW / ADDITIONAL DEVICES:**

Turn OFF Bluetooth on your previously paired device and turn ON Bluetooth on new device. Repeat **FIRST TIME STEUP** process for new devices.

**Notes:**

- Bluetooth is a wireless radio technology, which means it is sensitive to objects between the headphone and the connected device. The headphone is designed to be used within 33 feet (10 meters) of a connected device, with no major objects in between (walls, etc.).
- Once successfully connected, the headphone will memorize your device and automatically pair when turned on in the future. Only one device may be connected at a time. To pair a different device, first unpair the current one through its Bluetooth settings.
- If for any reason Bluetooth connection is lost, manually reconnect your Bluetooth device.

## BUTTON FUNCTIONS

**VOLUME UP:** Press once

**TRACK FORWARD:**  
Press & hold 2+ seconds

**VOLUME DOWN:** Press once

**TRACK BACKWARD:**  
Press & hold 2+ seconds

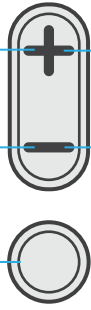
**POWER ON / OFF:**  
Press & hold 2+ seconds

**PLAY / PAUSE / ANSWER /  
HANG UP CALLS:** Press once

**REJECT INCOMING CALL:**  
Press & hold 1 second

**ACTIVATE SIRI (iOS) OR  
"OK GOOGLE" (ANDROID):**  
Press twice

**BLUETOOTH PAIRING:**  
See FIRST TIME SETUP



### SWITCH GAMING / MUSIC EQ:

Press and hold 1+ second both buttons simultaneously

**GAMING:** 1 Beep

**MUSIC:** 2 Beeps



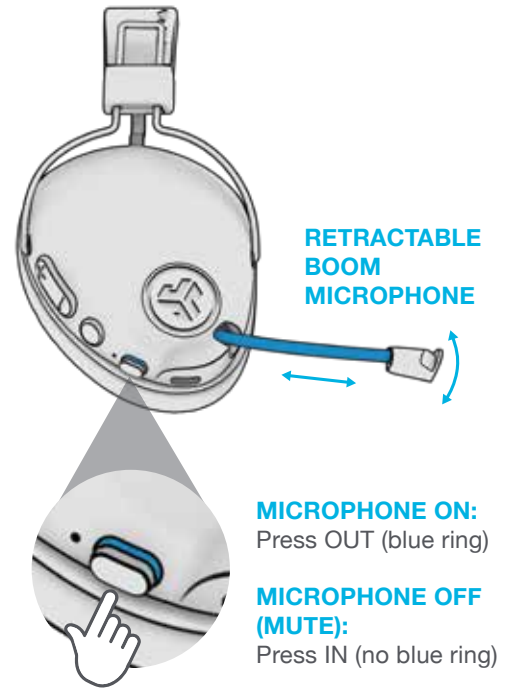
### GAMING

Increased mid-high frequency response for clear vocals and spacial awareness



### MUSIC

Amplified vocals and bass for enhanced music listening

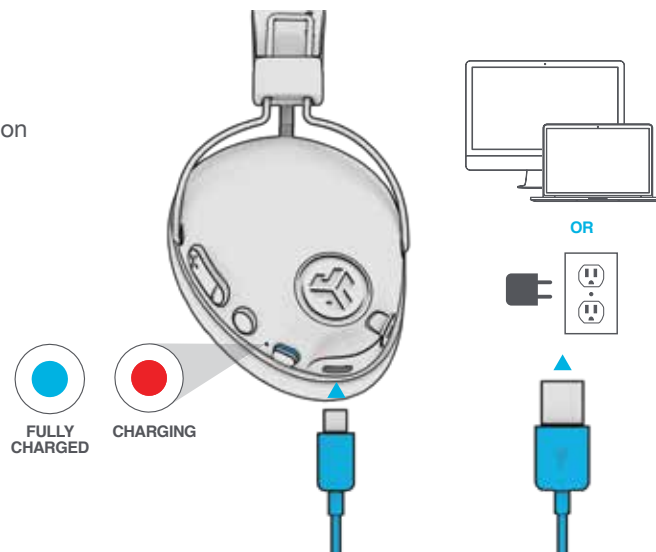


## CHARGING

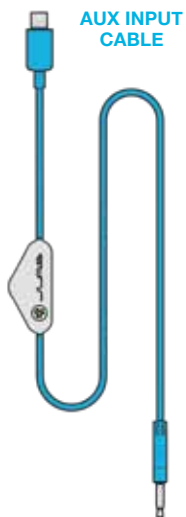
Connect the USB Type C charging cable (included) to the headphone and connect to a computer or USB 5v/1amp output device (not included). Make sure the USB connection has a power output source.

**Solid red light** indicates the headphone is charging.

**Solid blue light** indicates charging is complete.



## CONSOLE + MOBILE GAMING



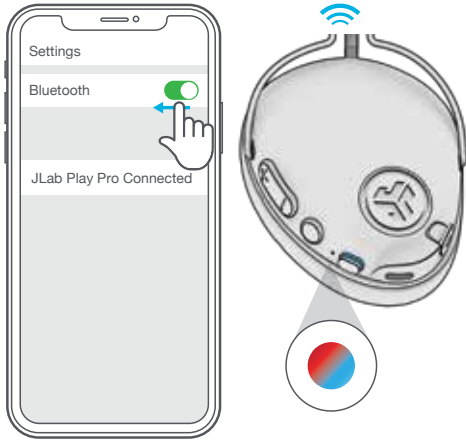
### NOTES:

- When using the AUX INPUT, the microphone and game volume will also be determined by your console settings. Adjust accordingly.
- The boom microphone and mute function works in both Bluetooth and AUX INPUT modes.
- The button functions on the headphone ear cup will only work in Bluetooth mode.

## MULTIPOINT (CONNECT 2 DEVICES SIMULTANEOUSLY)

1

Once **FIRST** device is connected, turn off Bluetooth in device settings. Play Pro will auto enter Bluetooth Pairing.



2

Enter your **SECOND** device Bluetooth settings and connect to JLab Play Pro.



3

Enter your **FIRST** device settings. Turn on Bluetooth and reconnect to Play Pro.



For more info and troubleshooting on MULTIPOINT visit: [JLAB.COM/SUPPORT](https://www.jlab.com/support)

## PC / MAC SETUP IF CONNECTED TO BLUETOOTH

### SETUP with PC (Windows 7, 8, or 10):

1. From the Start Menu, select the Control Panel.
2. Select Hardware and Sound category.
3. Select the Sound category.
4. The Playback tab should show JLab Play Pro Headphones connected as the Default Device.
5. Click the next tab that says Recording.
6. Right click the JLab Play Pro Headphones icon and select "Set as Default Device".
7. Click OK box to save changes.

### SETUP with MAC (macOS 10.1 and higher):

1. Open System Preferences and select the Sound icon.
2. Select the Input tab and select "JLab Play Pro".
3. Select Output tab and select "JLab Play Pro".
4. From this screen, set the Output volume to desired level.
5. Closing out of the window will save settings.

## CAUTIONS

- Avoid getting moisture or liquids on the headphone cups.
- Avoid extreme heat, cold, and humidity.
- Avoid dropping or crushing headphones, stressing the cable by rapid pulling or extreme force, or bending the cable at a sharp angle.
- Wax may build up in headphone cups, lowering the sound quality. Carefully remove the wax with a cotton swab or other small tool to improve the sound quality.
- If you experience discomfort or pain, try lowering the volume or discontinuing use temporarily.
- If you experience regular discomfort while using this product, discontinue use and consult your physician.
- We recommend you treat your headphones as you would a nice pair of sunglasses and keep them in safe location when not in use.



[Shop products](#) | [Product alerts](#) | [Burn-in your headphones](#)

JLab Store + Burn-in Tool



[JLAB.COM](https://www.jlab.com)