



JLAB AUDIO  
STUDIO WIRELESS HEADPHONES

We love that you are rocking JLab Audio!  
We take pride in our products and fully stand behind them.



### YOUR WARRANTY

All warranty claims are subject to JLab Audio authorization and at our sole discretion. Retain your proof of purchase to ensure warranty coverage.



### CONTACT US

Reach out to us at [support@jlabaudio.com](mailto:support@jlabaudio.com) or visit [jlabaudio.com/contact](http://jlabaudio.com/contact)

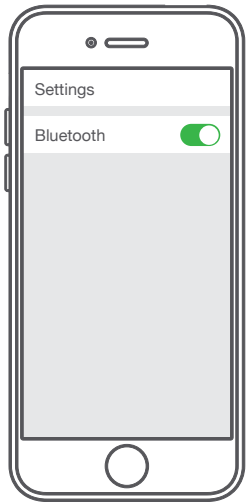
## REGISTER TODAY

[jlabaudio.com/register](http://jlabaudio.com/register)

Product updates | How-to tips  
FAQs & more

## FIRST TIME SETUP: BLUETOOTH PAIRING

- 1 Turn on the Bluetooth in your device settings.

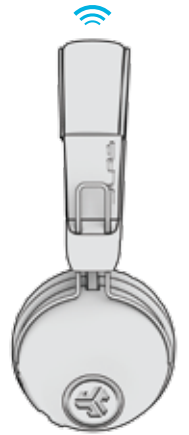
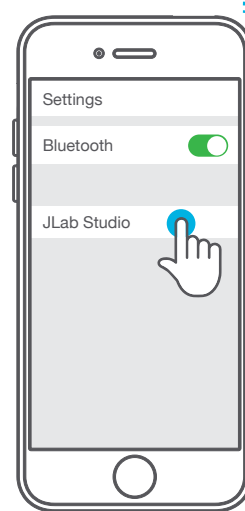


- 2 When the Studio Wireless Headphones are powered off, press and hold the Power Button for approximately 8 seconds.

Fast blinking red and blue light indicates searching for Bluetooth device.



- 3 Select "JLab Studio" in your device settings to connect.



When the headphones are paired, voice prompts "You are connected" and blue light will flash slowly.

## PAIRING NEW / ADDITIONAL DEVICES:

Turn OFF Bluetooth on your previously paired device and turn ON Bluetooth on new device. Repeat **FIRST TIME STEUP** process for new devices.

### Notes:

- Bluetooth is a wireless radio technology, which means it is sensitive to objects between the headphone and the connected device. The headphone is designed to be used within 33 feet (10 meters) of a connected device, with no major objects in between (walls, etc.).
- Once successfully connected, the headphone will memorize your device and automatically pair when turned on in the future. Only one device may be connected at a time. To pair a different device, first unpair the current one through its Bluetooth settings.
- If for any reason Bluetooth connection is lost, manually reconnect your Bluetooth device.

## BUTTON FUNCTIONS

**VOLUME UP:** Click once

**TRACK FORWARD:**

Click & hold 2+ seconds

**VOLUME DOWN:** Click once

**TRACK BACKWARD:**

Click & hold 2+ seconds

**POWER ON / OFF:**

Click & hold 2+ seconds

**PLAY / PAUSE / ANSWER /  
HANG UP CALLS:** Click once

**REJECT INCOMING CALL:**

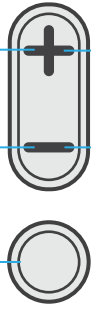
Click & hold 1 second

**ACTIVATE SIRI (iOS) OR  
"OK GOOGLE" (ANDROID):**

Click twice

**BLUETOOTH PAIRING:**

See FIRST TIME SETUP



**CHANGE EQ:**

Press both buttons simultaneously  
(Studio will cycle 3 EQ settings)

 **JLab SIGNATURE  
(One Beep)**

JLab C3™ signature sound  
with amplified vocals and bass

 **BALANCED  
(Two Beeps)**

Even sound with no additional  
sound enhancements

 **BASS BOOST  
(Three Beeps)**

Amplified bass and sub-bass

## CHARGING

**Note: For optimum performance, charge overnight with Micro USB cable prior to using. Allow about 3 hours to fully charge.**

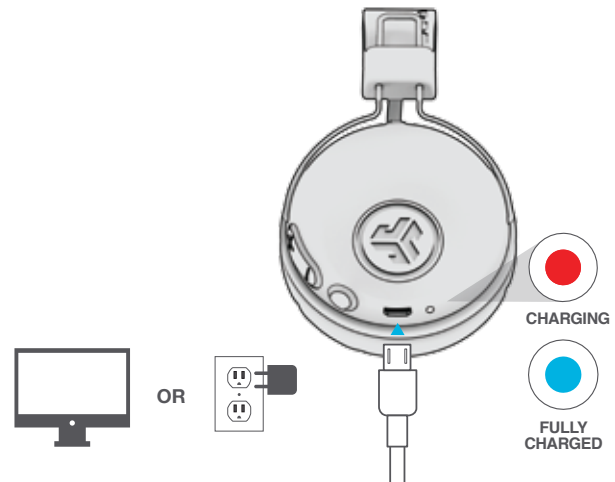
Connect the Micro USB (included) to the headphone and connect the USB into a computer or AC adaptor (not included). Make sure the USB connection has a power output source.

**Solid red light** indicates the headphone is charging.

**Solid blue light** indicates charging is complete.

**Note: Studio Bluetooth can still be used while charging.**

**Power on and connect to device after charging occurs.**



## CAUTIONS

- Avoid getting moisture or liquids on the headphone cups.
- Avoid extreme heat, cold, and humidity.
- Avoid dropping or crushing headphones, stressing the cable by rapid pulling or extreme force, or bending the cable at a sharp angle.
- Wax may build up in headphone cups, lowering the sound quality. Carefully remove the wax with a cotton swab or other small tool to improve the sound quality.
- If you experience discomfort or pain, try lowering the volume or discontinuing use temporarily.
- If you experience regular discomfort while using this product, discontinue use and consult your physician.
- We recommend you treat your headphones as you would a nice pair of sunglasses and keep them in safe location when not in use.



[Shop products](#) | [Product alerts](#) | [Burn-in your headphones](#)

JLab Audio + Burn-in Tool

