

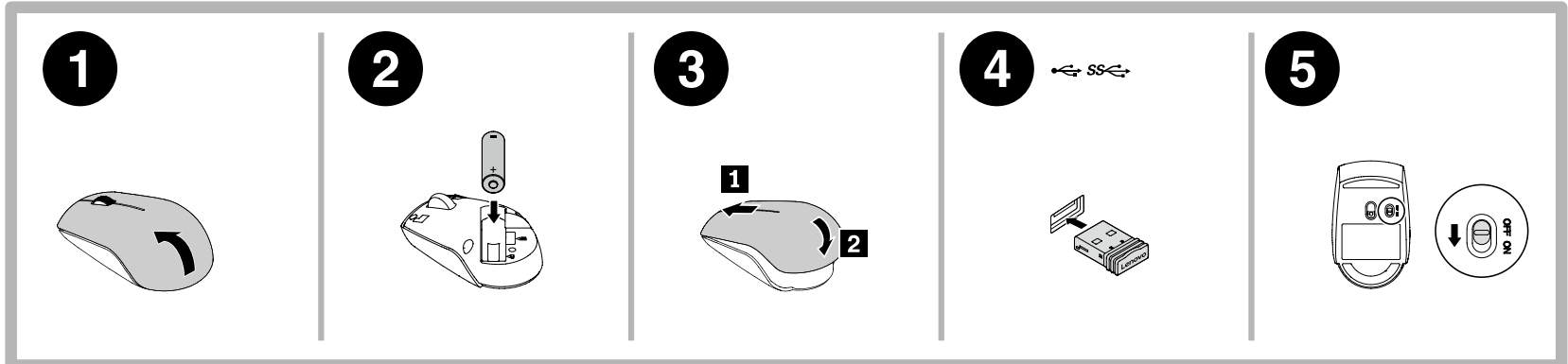
Lenovo 530 Wireless Mouse (L300)

<https://support.lenovo.com>



(1P)PN: SP40Z18982
Printed in China

Lenovo



Compliance information

The latest compliance information is available at: <https://www.lenovo.com/us/en/compliance>

Electromagnetic emission notices

Federal Communications Commission (FCC) Supplier's Declaration of Conformity

The following information refers to the Lenovo 530 Wireless Mouse, model: L300.

This equipment has been tested and found to comply with the limits for a Class B digital device, pursuant to Part 15 of the FCC Rules. These limits are designed to provide reasonable protection against harmful interference in a residential installation. This equipment generates, uses, and can radiate radio frequency energy and, if not installed and used in accordance with the instructions, may cause harmful interference to radio communications. However, there is no guarantee that interference will not occur in a particular installation. If this equipment does cause harmful interference to radio or television reception, which can be determined by turning the equipment off and on, the user is encouraged to try to correct the interference by one or more of the following measures:

- Reorient or relocate the receiving antenna.
- Increase the separation between the equipment and receiver.
- Connect the equipment into an outlet on a circuit different from that to which the receiver is connected.
- Consult an authorized dealer or service representative for help.

Lenovo is not responsible for any radio or television interference caused by using other than recommended cables and connectors or by unauthorized changes or modifications to this equipment. Unauthorized changes or modifications could void the user's authority to operate the equipment.

This device complies with Part 15 of the FCC Rules. Operation is subject to the following two conditions: (1) this device may not cause harmful interference, and (2) this device must accept any interference received, including interference that may cause undesired operation.

Responsible Party:
Lenovo (United States) Incorporated
7001 Development Drive
Morrisville, NC 27560
Email: FCC@lenovo.com



Industry Canada Compliance Statement

CAN ICES-3(B)/NMB-3(B)

Wireless-radio compliance information

Product models equipped with wireless communications comply with the radio frequency and safety standards of any country or region in which they have been approved for wireless use.

Besides this document, ensure that you read the Regulatory Notice for your country or region before using the wireless devices. To obtain a PDF version of the Regulatory Notice, go to https://support.lenovo.com/accessories/lenovo_530_wireless_mouse.

Brazil wireless-radio compliance information

Este equipamento não tem direito à proteção contra interferência prejudicial e não pode causar interferência em sistemas devidamente autorizados.

This equipment is not protected against harmful interference and may not cause interference with duly authorized systems.

Mexico wireless-radio compliance information

Advertencia: En México la operación de este equipo está sujeta a las siguientes dos condiciones: (1) es posible que este equipo o dispositivo no cause interferencia perjudicial y (2) este equipo o dispositivo debe aceptar cualquier interferencia, incluyendo la que pueda causar su operación no deseada.

Ukraine wireless-radio compliance information

Спрощена декларація про відповідність
Справжнім Lenovo PC HK Limited заявляє, що тип радіобладнання Lenovo 530 Wireless Mouse відповідає Технічному регламенту радіобладнання; повний текст декларації про відповідність доступний на веб-сайті за такою адресою: <http://conf.lenovo.ua/>
Радіобладнання працює в наступних смугах радіочастот та з наступною максимальною потужністю випромінювання даних смуг:

Технологія	Смуги радіочастот (МГц)	Максимальна потужність (дБм)
Short Range Device - 2.4GHz	2400-2483.5	10

Singapore wireless-radio compliance information

Complies with
IMDA Standards
DB102306

Export Classification Notice

This product is subject to the United States Export Administration regulations (EAR) and has an Export Classification Control Number (ECCN) of EAR99. It can be re-exported except to any of the embargoed countries in the EAR E1 country list.

Product information for mainland China

产品名称: 无线鼠标
产品型号: L300
制造商信息, 产品执行标准请参见产品外包装。
中国制造

Battery recycling information of countries and regions

Battery recycling information for Taiwan



廢電池請回收

Battery recycling information for the United States and Canada



US & Canada Only

Battery recycling information for the European Union

EU



EU Directive 2014/53/EU

Product Name	Frequency	Maximum Transmit Power (dBm)
Lenovo 530 Wireless Mouse	Short Range Device - 2.4 GHz	<10

EU contact: Lenovo (Slovakia), Landererova 12, 811 09 Bratislava, Slovakia



European Union conformity

Compliance with the Radio Equipment Directive

Hereby, Lenovo (Singapore) Pte. Ltd., declares that the radio equipment type listed at the beginning of this section is in compliance with Directive 2014/53/EU.

The full text of the product EU declaration of conformity is available at the following internet address:

<https://www.lenovo.com/us/en/compliance/eu-doc>

This radio equipment operates with frequency bands and maximum radio-frequency power as listed at the beginning of this section.

Bulgarian

Контакт за ЕС: Lenovo (Slovakia), Landererova 12, 811 09 Bratislava, Slovakia

Съответствие за Европейския съюз

Съответствие с Директивата за радиооборудване

С настоящото Lenovo (Singapore) Pte. Ltd. декларира, че безжичното оборудване, споменато в началото на този раздел съответства на Директивата за радиооборудване 2014/53/ЕС.

Пълният текст на декларацията за съответствие с ЕС относно системата е наличен на следния адрес в интернет:

<https://www.lenovo.com/us/en/compliance/eu-doc>

Това радиооборудване работи с честотни ленти и максимална радиочестотна мощност, както е вписано в началото на този раздел.

Croatian

Контакт u EU-u: Lenovo (Slovakia), Landererova 12, 811 09 Bratislava, Slovakia

Usklađenost sa zahtjevima Europske unije

Usklađenost s Direktivom o radijskoj opremi

Společnost Lenovo (Singapore) Pte. Ltd. ovime izjavljuje da je bežična oprema navedena na početku ovog odjeljka usklađena s Direktivom 2014/53/EU.

Potpuni tekst deklaracije EU-a o sukladnosti sustava dostupan je na sljedećoj internetskoj adresi:

<https://www.lenovo.com/us/en/compliance/eu-doc>

Ova radijska oprema funkcionira s frekvencijskim pojaskama i maksimalnom radiofrekvencijskom snagom koji su navedeni na početku ovog odjeljka.

Czech

Kontaktní informace pro Evropu: Lenovo (Slovakia), Landererova 12, 811 09 Bratislava, Slovakia

Shoda se směrnicemi Evropské unie

Shoda se směrnicí o rádiových zařízeních

Společnost Lenovo (Singapore) Pte. Ltd. tímto prohlašuje, že bezdrátová zařízení uvedená v této části dokumentu splňují požadavky směrnice o rádiových zařízeních 2014/53/EU.

Úplné znění EU prohlášení o shodě systému je dostupné na následujících internetových adresách:

<https://www.lenovo.com/us/en/compliance/eu-doc>

Toto rádiové zařízení pracuje s frekvencijskými pásmy a maximálním radiofrekvencijským výkonem, jak je uvedeno na začátku této části.

Danish

Kontakt i EU: Lenovo (Slovakia), Landererova 12, 811 09 Bratislava, Slovakia

Overholdelse af EU-krav

Overholdelse af Direktivet om radioudstyr

Lenovo (Singapore) Pte. Ltd. erklærer hermed, at det radioudstyr, der er angivet i starten af dette afsnit, overholder direktiv 2014/53/EU.

Hele teksten til EU's overensstemmelseserklæring findes på følgende internetadresse:

<https://www.lenovo.com/us/en/compliance/eu-doc>

Dette radioudstyr bruger frekvensbånd og maksimal radiofrekvensstrøm som angivet i starten af dette dokument.

Dutch

Contactadres in de EU: Lenovo (Slovakia), Landererova 12, 811 09 Bratislava, Slovakia

EU-conformiteit

Naleving van de richtlijn voor radioapparatuur

Hierbij verklaart Lenovo (Singapore) Pte. Ltd. dat de draadloze apparatuur, die in dit artikel is aangegeven, voldoet aan de richtlijn 2014/53/EU voor radioapparatuur. De volledige tekst van de EU-verklaring van conformiteit van het systeem is beschikbaar op de volgende internetpagina:

<https://www.lenovo.com/us/en/compliance/eu-doc>

Deze radioapparatuur werkt met frequentiebanden en het maximale radiofrequentievermogen die aan het begin van dit document worden vermeld.

Finnish

Yhteystiedot EU:ssa: Lenovo (Slovakia), Landererova 12, 811 09 Bratislava, Slovakia

Euroopan unionin vaatimustenmukaisuus

Radiolaitedirektiivin vaatimustenmukaisuus

Lenovo (Singapore) Pte. Ltd. ilmoittaa täten, että tämän jakson alussa luettelut radiolaitteityypit ovat direktiivin 2014/53/EU mukaisia.

Lausuma järjestelmän EU-säännöstenmukaisuudesta on saatavilla kokonaisuudessaan seuraavassa Internet-osoitteessa:

<https://www.lenovo.com/us/en/compliance/eu-doc>
Tämä radiolaitte toimii tämän jakson alussa ilmoitetuilla taajuuksalueilla ja enimmäisradiotaajuuksueholla.

French

Contact UE : Lenovo (Slovakia), Landererova 12, 811 09 Bratislava, Slovakia

Conformité aux directives de l'Union européenne

Conformité à la directive concernant l'équipement radio

Par la présente, Lenovo (Singapore) Pte. Ltd. déclare que les équipements sans fil listés au début de cette section sont conformes à la directive 2014/53/EU sur les équipements radio.

Le texte complet de la déclaration de l'UE de conformité du système est disponible à l'adresse suivante:

<https://www.lenovo.com/us/en/compliance/eu-doc>

Cet équipement radio utilise des bandes de fréquences et une alimentation à haute fréquence maximum comme énoncé au début de ce document.

German

EU-Kontakt: Lenovo (Slovakia), Landererova 12, 811 09 Bratislava, Slovakia

EU-Konformitätserklärung

Erfüllung der Funkanlagen-Richtlinie

Hiermit erklärt Lenovo (Singapore) Pte. Ltd., dass das in diesem Abschnitt aufgelistete Funkgerät die Funkanlagen-Richtlinie 2014/53/EU erfüllt.

Die vollständige EU-Konformitätserklärung für das System finden Sie unter der folgenden Internetadresse:

<https://www.lenovo.com/us/en/compliance/eu-doc>

Dieses Funkgerät verwendet die zu Beginn dieses Dokuments aufgelisteten Frequenzbänder und die dort aufgeführte maximale Funkfrequenzenergie.

Greek

Στοιχεία επικοινωνίας στην ΕΕ: Lenovo (Slovakia), Landererova 12, 811 09 Bratislava, Slovakia

Συμμόρφωση με τις διατάξεις της Ευρωπαϊκής Ένωσης

Συμμόρφωση με την Οδηγία περί Ραδιοεξοπλισμού

Διά του παρόντος, η Lenovo (Singapore) Pte. Ltd., δηλώνει ότι ο τύπος ραδιοεξοπλισμού που αναγράφεται στην αρχή της παρούσας ενότητας συμμορφώνεται με την Οδηγία 2014/53/ΕΕ.

Το πλήρες κείμενο της δήλωσης συμμόρφωσης της ΕΕ για το σύστημα διατίθεται στην εξής διεύθυνση στο Internet:

<https://www.lenovo.com/us/en/compliance/eu-doc>

Ο παρών ραδιοεξοπλισμός λειτουργεί στις ζώνες συχνότητων και με τη μέγιστη ισχύ ραδιοσυχνότητας που αναγράφονται στην αρχή του παρούσας ενότητας.

Hungarian

Reduce | Reuse | Recycle



First Edition (May 2020)
© Copyright Lenovo 2020.

LIMITED AND RESTRICTED RIGHTS NOTICE: If data or software is delivered pursuant to a General Services Administration "GSA" contract, use, reproduction, or disclosure is subject to restrictions set forth in Contract No. GS-35F-05925.

Kapcsolatfelvétel az EU-ban: Lenovo (Slovakia), Landererova 12, 811 09 Bratislava, Slovakia

Megfelelés az Európai Unió előírásainak
Megfelelés a Rádióberendezésekről szóló direktíváknak

A Lenovo (Singapore) Pte. Ltd. ezennel kijelenti, hogy a szakasz elején felsorolt rádiótipusok megfelelnek a 2014/53/EU direktívában foglaltaknak.

A rendszer EU-s megfelelésségi nyilatkozatának teljes szövege a következő webhelyen tekinthető meg: https://www.lenovo.com/us/en/compliance/eu-doc
A rádiós berendezés a dokumentum elején felsorolt frekvenciasávokon és maximális rádiófrekvenciás teljesítménnyel üzemel.

Itallian

Contacto UE: Lenovo (Slovakia), Landererova 12, 811 09 Bratislava, Slovakia

Conformità per l'Unione Europea

Conformità alla direttiva sulle apparecchiature radio
Con la presente documentazione, Lenovo (Singapore) Pte. Ltd. dichiara che l'apparechiatura wireless indicata in questa sezione è conforme alla direttiva 2014/53/EU sulle apparecchiature radio.

Il testo integrale della dichiarazione di conformità dei sistemi dell'UE è disponibile al seguente indirizzo Internet: https://www.lenovo.com/us/en/compliance/eu-doc
La presente apparecchiatura radio opera con le bande di frequenza e alla potenza massima di radiofrequenza indicate all'inizio del documento.

Norwegian

EU-kontakt: Lenovo (Slovakia), Landererova 12, 811 09 Bratislava, Slovakia

EU-samsvar

Samsvar med direktivet om radioutstyr

Lenovo (Singapore) Pte. Ltd. erklærer herved at radioutstyret som står oppført i begynnelsen av dette avsnittet, er i samsvar med direktiv 2014/53/EU.

Hele teksten til EU's samsvarserklæring finner du på følgende Internett-adresse:

https://www.lenovo.com/us/en/compliance/eu-doc
Dette radioutstyrets frekvensbånd og maksimale radiofrekvenseffekt står oppført i begynnelsen av dette avsnittet.

Polish

Kontakt w EU: Lenovo (Slovakia), Landererova 12, 811 09 Bratislava, Slovakia

Europejski znak zgodności

Zgodność z dyrektywą w sprawie sprzętu radiowego

Lenovo (Singapore) Pte. Ltd., niniejszym oświadczca, że typ urządzeń radiowych wymieniony na początku tej sekcji spełnia wymagania dyrektywy w sprawie sprzętu radiowego 2014/53/UE.

Pełna treść deklaracji zgodności systemu jest dostępna na następującej stronie internetowej:

https://www.lenovo.com/us/en/compliance/eu-doc

Ten sprzęt radiowy działa na pasmach o częstotliwościach radiowych, których maksymalną moc przedstawiono na początku tej sekcji.

Portuguese

Contacto na UE: Lenovo (Slovakia), Landererova 12, 811 09 Bratislava, Slovakia

Conformidade com os regulamentos da União Europeia

Conformidade com a Diretiva de Equipamento de Rádio

Pelo presente, a Lenovo (Singapore) Pte. Ltd. declara que o tipo de equipamento de rádio listado no início desta secção está em conformidade com a Diretiva 2014/53/UE.

O texto integral da declaração de conformidade da UE do sistema está disponível no seguinte endereço na Internet:

https://www.lenovo.com/us/en/compliance/eu-doc
Este equipamento de rádio funciona com bandas de frequência e com uma potência de frequência de rádio máxíma indicadas no início desta secção.

Romanian

Contact UE: Lenovo (Slovakia), Landererova 12, 811 09 Bratislava, Slovakia

Conformitatea pentru Uniunea Europeană
Conformitatea cu Directiva privind oare la echipamentele radio

Prin prezentul, a Lenovo (Singapore) Pte. Ltd., declară că tipul de echipament radio prezentat la începutul acestei secțiuni este în conformitate cu Directiva 2014/53/UE.

Textul complet al declarației de conformitate UE a sistemului este disponibil la următoarele adrese:

https://www.lenovo.com/us/en/compliance/eu-doc
Acest echipament radio operează cu benzi de frecvență și cu putere maximă a frecvenței radio așa cum este listat la începutul acestui document.

Slovak

Kontakt v EÚ: Lenovo (Slovakia), Landererova 12, 811 09 Bratislava, Slovakia

Súlád so smernicou Európskej únie

V súlade so smernicou o rádiových zariadeniach

Spoločnosť Lenovo (Singapore) Pte. Ltd. týmto vyhlasuje, že bezdrôtové zariadenie uvedené v úvode tejto časti je v súlade so smernicou o rádiových zariadeniach 2014/53/EÚ.

Úplné znenie systémového vyhlásenia EÚ o zhode je k dispozícii na týchto internetových adresách:

https://www.lenovo.com/us/en/compliance/eu-doc
Toto rádiové zariadenie pracuje vo frekvenčných pásmach s maximálnym rádiofrekvenčným výkonom uvedeným na začiatku tohto dokumentu.

Slovenian

Stik za EU: Lenovo (Slovakia), Landererova 12, 811 09 Bratislava, Slovakia

Skladnost s predpisi Evropske unije
Skladnost z direktivo o radijski opremi

Lenovo (Singapore) Pte. Ltd. s tem izjavlja, da je vrsta radijske opreme, navedena na začetku tega razdelka, skladna z Direktivo 2014/53/EU.

Celotno besedilo izjav EU o skladnosti je na voljo na tem internetnem naslovu:

https://www.lenovo.com/us/en/compliance/eu-doc
Ta radijska oprema deluje s frekvenčnimi pasovi in največjo radiofrekvenčno močjo, navedenimi na začetku tega razdelka.

Spanish

Contacto UE: Lenovo (Slovakia), Landererova 12, 811 09 Bratislava, Slovakia

Conformidad con la Unión Europea

Conformidad con la Directiva de equipos de radio

Mediante el presente documento, Lenovo (Singapore) Pte.

Ltd., declara que el tipo de equipo de radio indicado al principio de esta sección cumple con la Directiva de Equipos de Radio 2014/53/UE.

El texto completo de la declaración de conformidad del sistema de la UE está disponible en la siguiente dirección de Internet:

https://www.lenovo.com/us/en/compliance/eu-doc

Este equipo de radio funciona con bandas de frecuencia y energía de radiofrecuencia máxíma como se indica al comienzo de este documento.

Swedish

Kontakt i Europa: Lenovo (Slovakia), Landererova 12, 811 09 Bratislava, Slovakia

Överensstämmelse med EU-direktiv
Överensstämmelse med direktivet för radioutrustning

Härmed intygar Lenovo (Singapore) Pte. Ltd. att den trådlösa radioutrustning som beskrivs i början av detta avsnitt överensstämmer med direktivet 2014/53/EU. Den fullständiga texten i EU:s deklaration om överensstämmelse finns tillgänglig på:

https://www.lenovo.com/us/en/compliance/eu-doc
Denna radioutrustning använde frekvensband och maximal radiofrekvenseffekt enligt informationen i början av detta avsnitt.

İthalatçı – İmalatçı/Üretici Firma Bilgileri ve Diğer Bilgiler

1. İmalatçı ya da İthalatçı firmaya ilişkin bilgiler:

Ürünün ithalatçı firması, Lenovo Technology B.V. Merkezi Hollanda Türkiye İstanbul Şubesi'dir. Adresi ve telefonu şöyledir:

Palladium Tower İş Merkezi

Barbaros Mah. Kardelen Sok. No: 2 Kat: 3 Ofis No: 13 34746 Ataşehir İstanbul, Türkiye

Tel: 90 216 570 01 00

Faks: 90 216 577 01 00

2. Bakım, onarım ve kullanımda uyulması gereken kurallar:

Elektronik cihazlar için gösterilmesi gereken standart özeni göstermeniz yeterlidir. Cihaz çalışır durumda iken temizlik yapmayınız. Islak bezle, köpürtülmüş deterjanlarla, sulu süngerlerle temizlik yapmayınız. Sını kullanıcılar onarım konusunda yetkili değildir. Arıza söz konusu olduğuna inaniyorsanız telefonla danışabilir ya da ürünü bu kitapta yer alan servis istasyonlarından birine götürebilirsiniz.

3. Taşıma ve nakliye sırasında dikkat edilecek hususlar:
Ürününüzü ve bağlı olduğu aygıtı taşıırken ya da nakliye sırasında dikkat etmeniz gereken birkaç nokta vardır. Aygıt taşımadan önce tüm bağlı ortamların çıkartılması olması, bağlı aygıtların çözülmesi ve kabloların sökülmesi olması gerekir. Bu aygıtın zarar görmemesi için gereklidir.

Ayrıca aygıtınızı taşıırken uygun koruma sağlayan bir taşıma kutusu kullanılmasına dikkat edin. Bakıma ilişkin diğer ek bilgiler için kitabın ilgili bölümünden (eğer sağlanmışsa) yararlanabilirsiniz.

4. Aygıtla ilişkin bakım, onarım ya da temizliğe ilişkin bilgiler:

Aygıtla ilişkin kullanıcının yapabileceği bir bakım ya da onarım yoktur. Bakım ya da onarım gereksinin duyarsanız bir Çözüm Ortağı'ndan destek alabilirsiniz. Ayrıca servis istasyonlarına ilişkin bilgileri kitabınızın eklerinde bulabilirsiniz.

5. Kullanım sırasında insan ya da çevre sağlığına zararlı olabilecek durumlar:

Bu tür durumlar söz konusu olduğunda ürüne özel olarak bu kitabın ilgili bölümünde detaylı olarak ele alınmıştır. Kitabınızda bu tür bir uyarı yoksa, kullanmakta olduğunuz ürün için böyle bir durum söz konusu değildir.

6. Kullanım hatalarına ilişkin bilgiler:

Burada belirtilenler ile sınırlı olmamak kaydı ile bu bölümde bazı kullanıcı hatalarına ilişkin örnekler sunulmuştur. Bu ve benzeri konulara özen göstermeniz yeterlidir. Klavuz içinde daha ayrıntılı bilgiler verilebilir.

Örnekler:

Kabloların zorla ait olmadıkları yuvalara takılması Kumanda butonlarına gereğinden yüksek kuvvet uygulanması Aleti çalışır durumda taşımak, temizlemek vb. eylemler Alet üzerine kati ya da sıvı gıda maddesi dökülmesi Aletin taşıma sırasında korunmaması ve darbe alması

7. Ürünün özelliklerine ilişkin tanıtıcı ve temel bilgiler:
Ürününüze ilişkin tanıtıcı ve temel bilgileri kitabınızın ilgili bölümlerinde bulabilirsiniz.

8. Periyodik bakıma ilişkin bilgiler:

Ürün bir uzmanın yapması gereken periyodik bakımı içermez.

9. Bağlantı ve montaja ilişkin bilgiler:

Aksaminizi çalışır hale getirebilmemiz için gerekli bağlantı ve montaj bilgileri bu klavuzda yer almaktadır. Kuruluş işlemini kendiniz yapmak istemiyorsanız satıcıınızdan ya da bir Servis İstasyonu'ndan ücret karşılığında destek alabilirsiniz.

10. Tüketicinin Hakları

10.1. Garanti süresi, malın teslim tarihinden itibaren başlar ve 2 yıldır.

10.2. Malın bütün parçaları dahil olmak üzere tamamı garanti kapsamındadır.

10.3. Malın ayıplı olduğunun anlaşılması durumunda tüketici, 6502 sayılı Tüketicinin Korunması Hakkında Kanunun 11 inci maddesinde yer alan;

a- Sözleşmeden dönme,

b- Satış bedelinden indirim isteme,

c- Ücretsiz onarılması isteme,

ç- Satılanın ayıpsız bir misli ile değiştirilmesini isteme, haklarından birini kullanabilir.

10.4. Tüketicinin bu haklardan ücretsiz onarım hakkını seçmesi durumunda satıcı; işçilik masrafi, değiştirilen parça bedeli ya da başka herhangi bir ad altında hiçbir ücret talep etmeksizin malın onarımını yapmak veya yaptırmakla yükümlüdür. Tüketici ücretsiz onarım hakkını üretici veya ithalatçıya karşı da kullanabilir. Satıcı, üretici ve ithalatçı tüketicinin bu hakkını kullanmasından müteselsilen sorumludur.

10.5. Tüketicinin, ücretsiz onarım hakkını kullanması halinde malın;

- Garanti süresi içinde tekrar arızalanması,

- Garanti için gereken azami sürenin aşılması,

- Tamirinin mümkün olmadığını, yetkili servis istasyonu, satıcı, üretici veya ithalatçı tarafından bir raporla belirlenmesi durumlarında; tüketici malın bedel iadesini, ayıp oranında bedel indirimi ni veya imkân varsa malın ayıpsız misli ile değiştirilmesini satıcıdan talep edebilir. Satıcı, tüketicinin talebini reddedemez. Bu talebin yerine getirilmesini durumunda satıcı, üretici ve ithalatçı müteselsilen sorumludur.

10.6. Malın tamir süresi 20 iş gününü geçemez. Bu süre, garanti süresi içerisinde mala ilişkin arızanın yetkili servis istasyonuna veya satıcıya bildirim tarihinde, garanti süresi dışında ise malın yetkili servis istasyonuna teslim tarihinden itibaren başlar.Malın arızasının 10 iş günü içerisinde giderilememesi halinde, üretici veya ithalatçı; malın tamiri tamamlanncaya kadar, benzer özelliklere sahip başka bir malı tüketicinin kullanımına tahsis etmek zorundadır. Malın

garanti süresi içerisinde arızalanması durumunda, tamirde geçen süre garanti süresine eklenir.

10.7. Malın kullanma klavuzunda yer alan hususlara aykırı kullanılmasından kaynaklanan arızalar garanti kapsamı dışındadır.

10.8. Tüketici, garantiden doğan haklarının kullanılması ile ilgili olarak çikabileceک uyusmazlıklarda yerleşim yerinin bulunduğu veya tüketici işleminin yapıldığı yerdeki Tüketici Hakem Heyetine veya Tüketici Mahkemesine başvurabilir.

10.9. Satıcı tarafından bu Garanti Belgesinin verilmesi durumunda, tüketici Gümrük ve Ticaret Bakanlığı Tüketicinin Korunması ve Piyasa Gözetimi Genel Müdürlüğüne başvurabilir.

11. Bakanlıkça tespit ve ilan edilen kullanım ömrü: Bakanlıkça tespit ve ilan edilen kullanım ömrü 5 yıldır.

12. Enerji tüketen mallarda, malın enerji tüketimi açısından verimli kullanımına ilişkin bilgiler: Ürüne ait kullanma klavuzunda belirtilmiştir.

13. Servis istasyonlarına ilişkin bilgiler: Bunlar kitabınızı aynı başlıklı bölümünde belirtilmiştir. Herhangi bir onarım ya da yedek parça ihtiyacı durumda bu istasyonlardan birine başvurabilirsiniz.

14. İthal edilmiş mallarda, yurt dışındaki üretici firmanın unvanı ve açık adresi ile diğer eşşik bilgileri (telefon, telefaks ve e-posta vb.):

Lenovo PK HK Limited

23/F, Lincoln House, Taikoo Place,

979 King’s Road, Quarry Bay, Hong Kong

Tel: +852-2516 4700

Faks: +852-2516 5384

Servis İstasyonları ve Yedek Parça Malzemelerinin Temin Edileceği Adresler

Garanti süresi içerisinde müşteri arızalı ürünü aşağıda belirtilen merkezlere teslim ederek garanti hizmetinden yararlanır. Ürün yerinde garanti hizmeti içeriyorsa, bu merkezlerden birine telefon edebilirsiniz. Yedek parça malzemelerini de bu merkezlerden temin edebilirsiniz.

Garanti Hizmetinin Alınabileceği Merkezler

Arızalı İdeapad/IdeaCentre/Lenovo B serisi/Lenovo G serisi/Lenovo H serisi/Lenovo V serisi ürünlerini ücretsiz servise gönderebilmemiz için aşağıdaki numaralardan servis kaydı açtırabilirsiniz.

Lenovo Çağrı Merkezi: 0212 912 01 34

Garanti Hizmetinin Alınabileceği Merkezler:

ADANA

BDH Bilişim Destek Hiz. San. Ve Tic. A.Ş.

Mahfesiğmaz Mahallesi, 79021 Sokak, Özden Apt. Zemin kat, No: 15 Cukurova /Adana
http://www.bdh.com.tr
Tel: 0 212 314 10 10

AFYON

BDH Bilişim Destek Hiz. San. Ve Tic. A.Ş.

Dumlupınar Mah. Kamil Miras Cad.Afyon Kale Apt No: 25/A Merkez /Afyon

http://www.bdh.com.tr

Tel: 0 212 314 10 10

ANKARA

BDH Bilişim Destek Hiz. San. Ve Tic. A.Ş.

ÇETİN EMEÇ BULVARI 1324. CADDE (ESKİ 7. CADDE) NO: 37/5 ÖVEÇLER / ÇANKAYA
http://www.bdh.com.tr
Tel: 0 212 314 10 10

ANTALYA

BDH Bilişim Destek Hiz. San. Ve Tic. A.Ş.

Çayırbaşı mah. Değirmenönü cd.No:129/6 Muratpaşa /ANTALYA

http://www.bdh.com.tr

Tel: 0 212 314 10 10

AYDIN

BDH Bilişim Destek Hiz. San. Ve Tic. A.Ş.

Efeler Mahallesi, Atatürk Bulvarı, Alaçam Cad. No: 8 Zemin/A /AYDIN

http://www.bdh.com.tr

Tel: 0 212 314 10 10

BALIKESİR

BDH Bilişim Destek Hiz. San. Ve Tic. A.Ş.

2. Sakarya MH. Bağlar SK. No: 223/1A Zemin Kat MERKEZ /BALIKESİR P.K.10020

http://www.bdh.com.tr

Tel: 0 212 314 10 10

BURSA

BDH Bilişim Destek Hiz. San. Ve Tic. A.Ş.

Fethiye Mah.Mudanya Cad.No:327 Solukçu İş Merkezi Bodrum Kat Nilüfer /BURSA

http://www.bdh.com.tr

Tel: 0 212 314 10 10

DENİZLİ

BDH Bilişim Destek Hiz. San. Ve Tic. A.Ş.

Değirmenönü Mah 1539 Sk N: 39/1 Merkez /DENİZLİ

http://www.bdh.com.tr

Tel: 0 212 314 10 10

DÜZCE

BDH Bilişim Destek Hiz. San. Ve Tic. A.Ş.

Koçyazı Mah.Zahid El Keversci Bulvarı Zümrüt Apartmanı A Blok N: 3 /DÜZCE

http://www.bdh.com.tr

Tel: 0 212 314 10 10

ERZURUM

BDH Bilişim Destek Hiz. San. Ve Tic. A.Ş.

Vaniefendi mah. Çağla iş merkezi Kat: 3 no: 13 Yakutiye/ERZURUM

http://www.bdh.com.tr

Tel: 0 212 314 10 10

GAZİANTEP

BDH Bilişim Destek Hiz. San. Ve Tic. A.Ş.

Atatürk mah. Adnan İnancı cad. No: 26 Şehit Kamil / Gaziantep

http://www.bdh.com.tr

Tel: 0 212 314 10 10

İSTANBUL

BDH Bilişim Destek Hiz. San. Ve Tic. A.Ş.

Gülbahar Mahallesi. Avni Dilligil Sk. Çelik İş Merkezi No: 2 Mecidiyeköy/Şişli İstanbul

http://www.bdh.com.tr

Tel: 0 212 314 10 10

BDH Bilişim Destek Hiz. San. Ve Tic. A.Ş.

Flatofis İstanbul Otakçılar Cad. No: 78 Kat: 1 D Blok No: 78 Eyüps/İstanbul

http://www.bdh.com.tr

Tel: 0 212 314 10 10

İZMİR

BDH Bilişim Destek Hiz. San. Ve Tic. A.Ş.

Gazi Bulvarı No: 37/A Çankaya /İZMİR

http://www.bdh.com.tr

Tel: 0 212 314 10 10

KOCAELİ

BDH Bilişim Destek Hiz. San. Ve Tic. A.Ş.

Sanayi Mah.Çarşı Yapı Sitesi 3416 Ada C Blok No: 20 İZMİT/KOCAELİ

http://www.bdh.com.tr

Tel: 0 212 314 10 10

KONYA

BDH Bilişim Destek Hiz. San. Ve Tic. A.Ş.

Musalla Bağları Mh.Mahser Sk.16/C Selçuklu/KONYA

http://www.bdh.com.tr

Tel: 0 212 314 10 10

MERSİN

BDH Bilişim Destek Hiz. San. Ve Tic. A.Ş.

Menderes mah.35423 Sokak Kaynak Apt. No: 32/12 Mezitli /Mersin

http://www.bdh.com.tr

Tel: 0 212 314 10 10

ORDU

BDH Bilişim Destek Hiz. San. Ve Tic. A.Ş.

Service, support, and warranty information

for options and accessories

<https://support.lenovo.com>

<https://www.lenovo.com/safety>

Statement on USB transfer rate

Depending on many factors such as the processing capability of the host and peripheral devices, file attributes, and other factors related to system configuration and operating environments, the actual transfer rate using the various USB connectors on this device will vary and will be slower than the data rate listed below for each corresponding device.

USB device	Data rate (Gbit/s)
3.1 Gen 1	5
3.1 Gen 2	10
3.2	20

Note:

The above statement applies to USB 3.1 Gen 1 (USB 3.0), USB 3.1 Gen 2, and USB 3.2 connectors that may be available on your device and mentioned in the device *User Guide, Setup Guide*, and other related documentation.

Déclaration sur le taux de transfert USB

En fonction de nombreux facteurs tels que la capacité de traitement de l'hôte et des périphériques, des attributs de fichiers et d'autres facteurs relatifs à la configuration du système et de l'environnement d'exploitation, le taux de transfert réel des différents connecteurs USB sur ce périphérique peut varier et est inférieur à la vitesse de transfert listée ci-dessous pour chaque périphérique correspondant.

Périphérique USB	Vitesse de transfert (Gbits/s)
3.1 Gen 1	5
3.1 Gen 2	10
3.2	20

Remarque :

La déclaration ci-dessus s'applique aux connecteurs USB 3.1 Gen 1 (USB 3.0), USB 3.1 Gen 2 et USB 3.2 qui peuvent être disponibles sur votre périphérique et qui sont mentionnés dans le Guide d'utilisation du périphérique, le Guide de configuration et les autres documentations associées.

Declaración sobre la tasa de transferencia USB

Según muchos factores, como la capacidad de procesamiento del host y dispositivos periféricos, atributos de archivos y otros factores relacionados con la configuración de sistemas y entornos operativos, la velocidad de transferencia real usando los distintos conectores USB en este dispositivo variará y será menor que la velocidad de datos indicada continuación para cada dispositivo correspondiente.

Dispositivo USB	Velocidad de datos (GB/s)
3.1 Gen 1	5
3.1 Gen 2	10
3.2	20

Note:

La declaración anterior se aplica a USB 3.1 Gen 1 (USB 3.0), USB 3.1 Gen 2 y conectores USB 3.2 que puedan estar disponibles en su dispositivo y que se mencionan en la Guía del usuario del dispositivo, la Guía de instalación y otra documentación relacionada.

Service and Support

The following information describes the technical support that is available for your product, during the warranty period or throughout the life of your product. Refer to the Lenovo Limited Warranty for a full explanation of Lenovo warranty terms.

Online technical support

Online technical support is available during the lifetime of a product at:

<https://support.lenovo.com>

Product replacement assistance or exchange of defective components are also available during the warranty period. A Lenovo technical support representative can help you determine the best alternative.

Options installed in Lenovo computers

If your Lenovo option is installed into a Lenovo computer, the option also is covered by the Warranty terms of the computer in which it is installed. Depending on your computer model and geographic location, this can entitle the Lenovo option to warranty service for up to three years and you might be entitled to service at your location. For details, see the warranty terms for your Lenovo computer.

Telephone technical support

Before contacting a Lenovo technical support representative, please have the following information available: option name and number, proof of purchase, computer manufacturer, model, serial number and manual, the exact wording of any error message, description of the problem, and the hardware and software configuration information for your system.

Your technical support representative might want to walk you through the problem while you are at your computer during the call.

Phone numbers are subject to change without notice. The most up-to-date telephone list for Lenovo Support is always available at <https://pcsupport.lenovo.com/supportphonelist>. If the telephone number for your country or region is not listed, contact your Lenovo reseller or Lenovo marketing representative.

Lenovo Limited Warranty

L505-0010-02/08/2011

This Lenovo Limited Warranty consists of the following parts:

Part 1 - General Terms

Part 2 - Country-specific Terms

Part 3 - Warranty Service Information

The terms of **Part 2** replace or modify terms of **Part 1** as specified for a particular country.

Part 1 - General Terms

This Lenovo Limited Warranty applies only to Lenovo hardware products you purchased for your own use and not for resale. This Lenovo Limited Warranty is available in other languages at https://www.lenovo.com/warranty/llw_02.

What this Warranty Covers

Lenovo warrants that each Lenovo hardware product that you purchase is free from defects in materials and workmanship under normal use during the warranty period. The warranty period for the product starts on the original date of purchase as shown on your sales receipt or invoice or as may be otherwise specified by Lenovo. The warranty period and type of warranty service that apply to your product are as specified in **Part 3 - Warranty Service Information** below. This warranty only applies to products in the country or region of purchase.

THIS WARRANTY IS YOUR EXCLUSIVE WARRANTY AND REPLACES ALL OTHER WARRANTIES OR CONDITIONS, EXPRESS OR IMPLIED, INCLUDING, BUT NOT LIMITED TO, ANY IMPLIED WARRANTIES OR CONDITIONS OF MERCHANTABILITY OR FITNESS FOR A PARTICULAR PURPOSE. AS SOME STATES OR JURISDICTIONS DO NOT ALLOW THE EXCLUSION OF EXPRESS OR IMPLIED WARRANTIES, THE ABOVE EXCLUSION MAY NOT APPLY TO YOU. IN THAT EVENT, SUCH WARRANTIES APPLY ONLY TO THE EXTENT AND FOR SUCH DURATION AS REQUIRED BY LAW AND ARE LIMITED IN DURATION TO THE WARRANTY PERIOD. AS SOME STATES OR JURISDICTIONS DO NOT ALLOW LIMITATIONS ON THE DURATION OF AN IMPLIED WARRANTY, THE ABOVE LIMITATION ON DURATION MAY NOT APPLY TO YOU.

How to Obtain Warranty Service

If the product does not function as warranted during the warranty period, you may obtain warranty service by contacting Lenovo or a Lenovo approved Service Provider. A list of approved Service Providers and their telephone numbers is available at:

<https://pcsupport.lenovo.com/supportphonelist>. Warranty service may not be available in all locations and may differ from location to location. Charges may apply outside a Service Provider's normal service area. Contact a local Service Provider for information specific to your location.

Customer Responsibilities for Warranty Service

Before warranty service is provided, you must take the following steps:

- Follow the service request procedures specified by the Service Provider.
- Backup or secure all programs and data contained in the product.
- Provide the Service Provider with all system keys or passwords.
- Provide the Service Provider with sufficient, free, and safe access to your facilities to perform service.
- Remove all data, including confidential information, proprietary information and personal information, from the product or, if you are unable to remove any such information, modify the information to prevent its access by another party or so that it is not personal data under applicable law. The Service Provider shall not be responsible for the loss or disclosure of any data, including confidential information, proprietary information, or personal information, on a product returned or accepted for warranty service.
- Remove all features, parts, options, alterations, and attachments not covered by the warranty.
- Ensure that the product or part is free of any legal restrictions that prevent its replacement.
- If you are not the owner of a product or part, obtain authorization from the owner for the Service Provider to provide warranty service.

What Your Service Provider Will Do to Correct Problems

When you contact a Service Provider, you must follow the specified problem determination and resolution procedures.

The Service Provider will attempt to diagnose and resolve your problem by telephone, e-mail or remote assistance. The Service Provider may direct you to download and install designated software updates.

Some problems may be resolved with a replacement part that you install yourself called a "Customer Replaceable Unit" or "CRU." If so, the Service Provider will ship the CRU to you for you to install.

If your problem cannot be resolved over the telephone, through

the application of software updates or the installation of a CRU, the Service Provider will arrange for service under the type of warranty service designated for the product under **Part 3 - Warranty Service Information** below.

If the Service Provider determines that it is unable to repair your product, the Service Provider will replace it with one that is at least functionally equivalent.

If the Service Provider determines that it is unable to either repair or replace your product, your sole remedy under this Limited Warranty is to return the product to your place of purchase or to Lenovo for a refund of your purchase price.

Replacement Products and Parts

When warranty service involves the replacement of a product or part, the replaced product or part becomes Lenovo's property and the replacement product or part becomes your property. Only unaltered Lenovo products and parts are eligible for replacement. The replacement product or part provided by Lenovo may not be new, but it will be in good working order and at least functionally equivalent to the original product or part. The replacement product or part shall be warranted for the balance of the period remaining on the original product.

Use of Personal Contact Information

If you obtain service under this warranty, you authorize Lenovo to store, use and process information about your warranty or service and your contact information, including name, phone number, address, and e-mail address. Lenovo may use this information to perform service under this warranty. We may contact you to inquire about your satisfaction with our warranty service or to notify you about any product recalls or safety issues. In accomplishing these purposes, you authorize Lenovo to transfer your information to any country where we do business and to provide it to third parties acting on our behalf. We may also disclose it where required by law. Lenovo's privacy policy is available at www.lenovo.com/.

What this Warranty Does not Cover

This warranty does not cover the following:

- Uninterrupted or error-free operation of a product.
- Loss of, or damage to, your data by a product.
- Any software programs, whether provided with the product or installed subsequently.
- Failure or damage resulting from misuse, abuse, accident, modification, unsuitable physical or operating environment, natural disasters, power surges, improper maintenance, or use not in accordance with product information materials.
- Damage caused by a non-authorized service provider.
- Failure of, or damage caused by, any third party products, including those that Lenovo may provide or integrate into the Lenovo product at your request.
- Any technical or other support, such as assistance with "how to" questions and those regarding product set-up and installation.
- Products or parts with an altered identification label or from which the identification label has been removed.

Limitation of Liability

Lenovo is responsible for loss or damage to your product only while it is in the Service Provider's possession or in transit, if the Service Provider is responsible for the transportation.

Neither Lenovo nor the Service Provider is responsible for loss or disclosure of any data, including confidential information, proprietary information, or personal information, contained in a product.

UNDER NO CIRCUMSTANCES, AND NOTWITHSTANDING THE FAILURE OF ESSENTIAL PURPOSE OF ANY REMEDY SERVICE FORTH HEREIN, SHALL LENOVO, ITS AFFILIATES, SUPPLIERS, RESELLERS, OR SERVICE PROVIDERS BE LIABLE FOR ANY OF THE FOLLOWING EVEN IF INFORMED OF THEIR POSSIBILITY AND REGARDLESS OF WHETHER THE CLAIM IS BASED IN CONTRACT, WARRANTY, NEGLIGENCE, STRICT LIABILITY OR OTHER THEORY OF LIABILITY: 1) THIRD PARTY CLAIMS AGAINST YOU FOR DAMAGES; 2) LOSS, DAMAGE, OR DISCLOSURE OF YOUR DATA; 3) SPECIAL, INCIDENTAL, PUNITIVE, INDIRECT OR CONSEQUENTIAL DAMAGES, INCLUDING BUT NOT LIMITED TO LOST PROFITS, BUSINESS REVENUE, GOODWILL OR ANTICIPATED SAVINGS, IN NO CASE SHALL THE TOTAL LIABILITY OF LENOVO, ITS AFFILIATES, SUPPLIERS, RESELLERS OR SERVICE PROVIDERS FOR DAMAGES FROM ANY CAUSE EXCEED THE AMOUNT OF ACTUAL DIRECT DAMAGES, NOT TO EXCEED THE AMOUNT PAID FOR THE PRODUCT.

THE FOREGOING LIMITATIONS DO NOT APPLY TO DAMAGES FOR BODILY INJURY (INCLUDING DEATH), DAMAGE TO REAL PROPERTY OR DAMAGE TO TANGIBLE PERSONAL PROPERTY FOR WHICH LENOVO IS LIABLE UNDER LAW.

IN STATES OR JURISDICTIONS DO NOT ALLOW THE EXCLUSION OR LIMITATION OF INCIDENTAL OR CONSEQUENTIAL DAMAGES, THE ABOVE LIMITATION OR EXCLUSION MAY NOT APPLY TO YOU.

Your Other Rights

THIS WARRANTY GIVES YOU SPECIFIC LEGAL RIGHTS. YOU MAY HAVE OTHER RIGHTS ACCORDING TO THE APPLICABLE LAWS OF YOUR STATE OR JURISDICTION. YOU MAY ALSO HAVE OTHER RIGHTS UNDER A WRITTEN AGREEMENT WITH LENOVO, NOTHING IN THIS WARRANTY AFFECTS STATUTORY RIGHTS, INCLUDING RIGHTS OF CONSUMERS UNDER LAWS OR REGULATIONS GOVERNING THE SALE OF CONSUMER GOODS THAT CANNOT BE WAIVED OR LIMITED BY CONTRACT.

Part 2 - Country-specific Terms

Australia

"Lenovo" means Lenovo (Australia & New Zealand) Pty Limited ABN 70 112 394 411. Address: Level 10, North Tower, 1-5 Railway Street, Chatswood, NSW, 2067. Telephone: +61 2 8003 8200. Email: lensyid_au@lenovo.com.

The following replaces the same section in Part 1:

What this Warranty Covers:

Lenovo warrants that each hardware product that you purchase is free from defects in materials and workmanship under normal use and conditions during the warranty period. If the product fails due to a covered defect during the warranty period, Lenovo will provide you a remedy under this Limited Warranty. The warranty period for the product starts on the original date of purchase specified on your sales receipt or invoice unless Lenovo informs you otherwise in writing. The warranty period and type of warranty service that apply to your product are set forth below in **Part 3 - Warranty Service Information**.

THE BENEFITS GIVEN BY THIS WARRANTY ARE IN ADDITION TO YOUR RIGHTS AND REMEDIES AT LAW, INCLUDING THOSE UNDER THE AUSTRALIAN CONSUMER LAW.

The following replaces the same section in Part 1:

When warranty service involves the replacement of a product or part, the replaced product or part becomes Lenovo's property and the replacement product or part becomes your property. Only unaltered Lenovo products and parts are eligible for replacement. The replacement product or part provided by Lenovo may not be new, but it will be in good working order and at least functionally equivalent to the original product or part. The replacement product or part shall be warranted for the balance of the period remaining on the original product. Products and parts presented for repair may be replaced by refurbished products or parts of the same type rather than being repaired. Refurbished parts may be used to repair the product; and repair of the product may result in loss of data, if the product is capable of retaining user-generated data.

The following is added to the same section in Part 1:

Use of Personal Contact Information: Lenovo will not be able to perform our service under this warranty if you refuse to provide your information or do not wish us to transfer your information to our agent or contractor. You have the right to access your personal contact information and request correction of any errors in it pursuant to the Privacy Act 1988 by contacting Lenovo.

The following replaces the same section in Part 1:

Limitation of Liability: Lenovo is responsible for loss or damage to your product only while it is in the Service Provider's possession or in transit, if the Service Provider is responsible for the transportation. Neither Lenovo nor the Service Provider is responsible for loss or disclosure of any data, including confidential information, proprietary information, or personal information, contained in a product.

TO THE EXTENT PERMITTED BY LAW, UNDER NO CIRCUMSTANCES AND NOTWITHSTANDING THE FAILURE OF ESSENTIAL PURPOSE OF ANY REMEDY SET FORTH HEREIN, SHALL LENOVO, ITS AFFILIATES, SUPPLIERS, RESELLERS, OR SERVICE PROVIDERS BE LIABLE FOR ANY OF THE FOLLOWING EVEN IF INFORMED OF THEIR POSSIBILITY AND REGARDLESS OF WHETHER THE CLAIM IS BASED IN CONTRACT, WARRANTY, NEGLIGENCE, STRICT LIABILITY OR OTHER THEORY OF LIABILITY: 1) THIRD PARTY CLAIMS AGAINST YOU FOR DAMAGES; 2) LOSS, DAMAGE OR DISCLOSURE OF YOUR DATA; 3) SPECIAL, INCIDENTAL, PUNITIVE, INDIRECT OR CONSEQUENTIAL DAMAGES, INCLUDING BUT NOT LIMITED TO LOST PROFITS, BUSINESS REVENUE, GOODWILL OR ANTICIPATED SAVINGS, IN NO CASE SHALL THE TOTAL LIABILITY OF LENOVO, ITS AFFILIATES, SUPPLIERS, RESELLERS OR SERVICE PROVIDERS FOR DAMAGES FROM ANY CAUSE EXCEED THE AMOUNT OF ACTUAL DIRECT DAMAGES, NOT TO EXCEED THE AMOUNT PAID FOR THE PRODUCT.

THE FOREGOING LIMITATIONS DO NOT APPLY TO DAMAGES FOR BODILY INJURY (INCLUDING DEATH), DAMAGE TO REAL PROPERTY OR DAMAGE TO TANGIBLE PERSONAL PROPERTY FOR WHICH LENOVO IS LIABLE UNDER LAW.

IN STATES OR JURISDICTIONS DO NOT ALLOW THE EXCLUSION OR LIMITATION OF INCIDENTAL OR CONSEQUENTIAL DAMAGES, THE ABOVE LIMITATION OR EXCLUSION MAY NOT APPLY TO YOU.

YOUR OTHER RIGHTS
THIS WARRANTY GIVES YOU SPECIFIC LEGAL RIGHTS. YOU ALSO HAVE OTHER RIGHTS AT LAW, INCLUDING UNDER THE AUSTRALIAN CONSUMER LAW. NOTHING IN THIS WARRANTY AFFECTS STATUTORY RIGHTS OR RIGHTS AT LAW, INCLUDING RIGHTS THAT CANNOT BE WAIVED OR LIMITED BY CONTRACT.

For example, our products come with guarantees that cannot be excluded under the Australian Consumer Law. You are entitled to a replacement or refund for a major failure and compensation for any other reasonably foreseeable loss or

damage. You are also entitled to have the products repaired or replaced if the products fail to be of acceptable quality and the failure does not amount to a major failure.

New Zealand

The following is added to the same section in Part 1:

Use of Personal Information:

Lenovo will not be able to perform our service under this warranty if you refuse to provide your information or do not wish us to transfer your information to our agent or contractor. You have the right to access your personal information and request correction of any errors in it pursuant to the Privacy Act 1993 by contacting Lenovo (Australia & New Zealand) Pty Limited ABN 70 112 394 411. Address: Level 10, North Tower, 1-5 Railway Street, Chatswood, NSW, 2067. Telephone: 61 2 8003 8200. Email: lensyid_au@lenovo.com.

Bangladesh, Cambodia, India, Indonesia, Nepal, Philippines, Vietnam and Sri Lanka

The following is added to Part 1:

Dispute Resolution
Disputes arising out of or in connection with this warranty shall be finally settled by arbitration held in Singapore. This warranty shall be governed, construed and enforced in accordance with the laws of Singapore, without regard to conflict of laws. If you acquired the product in **India**, disputes arising out of or in connection with this warranty shall be finally settled by arbitration held in Bangalore, India. Arbitration in Singapore shall be held in accordance with the Arbitration Rules of Singapore International Arbitration Center ("SIAC Rules") then in effect. Arbitration in India shall be held in accordance with the laws of India then in effect. The arbitration award shall be final and binding on the parties without appeal. Any award shall be in writing and set forth the findings of fact and the conclusions of law. All arbitration proceedings, including all documents presented in such proceedings shall be conducted in the English language. The English language version of this warranty prevails over any other language version in such proceedings.

European Economic Area (EEA)

The following is added to Part 1:

Customers in the EEA may contact Lenovo at the following address: EMEA Service Organisation, Lenovo (International) B.V., Landererstraße 12, 811 09 Bratislava, Slovakia. Service under this warranty for Lenovo hardware products purchased in EEA countries may be obtained in any EEA country in which the product has been announced and made available by Lenovo.

Russia

The following is added to Part 1:

Product Service Life
The product service life is four (4) years from the original date of purchase.

Part 3 - Warranty Service Information

If required, the Service Provider will provide repair or exchange service depending on the type of warranty service specified for your product and the available service.

Scheduling of service will depend upon the time of your call, parts availability, and other factors.

Country or Region of Purchase	Warranty Period	Service Type
Austria, Australia, Belgium, UK, Canada, Denmark, Estonia, US, Finland, France, Germany, Iceland, Ireland, Italy, Israel, Japan, Latvia, Lithuania, Luxembourg, Spain, Netherlands, New Zealand, Norway, Sweden, Switzerland, Korea, Russia, Taiwan, Turkmenistan, Ukraine,	1 year	1
Brazil, Belarus, Georgia, Kazakhstan, Korea, Russia, Taiwan, Turkmenistan, Ukraine,	1 year	4
Algeria, Argentina, Bolivia, Bosnia-Herzegovina, Bulgaria, Bahrain, Chile, Colombia, Croatia, Cyprus, Czech Republic, Egypt, Ecuador, Hong Kong, Hungary, India, Indonesia, Kuwait, Kenya, Macao, Malaysia, Macedonia, Mexico, Peru, Nigeria, Qatar, Oman, Paraguay, Philippines, Poland, Romania, Singapore, Serbia/Montenegro, Slovakia, Slovenia, South Africa, Sri Lanka, Thailand, United Arab Emirates, Uruguay, Venezuela, Vietnam	1 year	1 or 4
Saudi Arabia, Turkey	2 years	1 or 4

Types of Warranty Service

1. Customer Replaceable Unit ("CRU") Service
Under CRU Service, the Service Provider will ship CRUs to you at its cost for installation by you. CRU information and replacement instructions are shipped with your product and are available for purchase from a Service Provider or Lenovo or are easily installed by you are called "Self-service CRUs." "Optional-service CRUs" are CRUs that may require some technical skill and tools. Installation of Self-service CRUs is your responsibility. You may request that a Service Provider install Optional-service CRUs under one of the other types of warranty service designated for your product. An optional service offering may be available for purchase at any time upon request. CRUs that are easily installed by you are called "Self-service CRUs." "Optional-service CRUs" are CRUs that may require some technical skill and tools. Installation of Self-service CRUs is your responsibility. You may request that a Service Provider install Optional-service CRUs under one of the other types of warranty service designated for your product. An optional service offering may be available for purchase at any time upon request. CRUs that are easily installed by you are called "Self-service CRUs." "Optional-service CRUs" are CRUs that may require some technical skill and tools. Installation of Self-service CRUs is your responsibility. You may request that a Service Provider install Optional-service CRUs under one of the other types of warranty service designated for your product. An optional service offering may be available for purchase at any time upon request. CRUs that are easily installed by you are called "Self-service CRUs." "Optional-service CRUs" are CRUs that may require some technical skill and tools. Installation of Self-service CRUs is your responsibility. You may request that a Service Provider install Optional-service CRUs under one of the other types of warranty service designated for your product. An optional service offering may be available for purchase at any time upon request. CRUs that are easily installed by you are called "Self-service CRUs." "Optional-service CRUs" are CRUs that may require some technical skill and tools. Installation of Self-service CRUs is your responsibility. You may request that a Service Provider install Optional-service CRUs under one of the other types of warranty service designated for your product. An optional service offering may be available for purchase at any time upon request. CRUs that are easily installed by you are called "Self-service CRUs." "Optional-service CRUs" are CRUs that may require some technical skill and tools. Installation of Self-service CRUs is your responsibility. You may request that a Service Provider install Optional-service CRUs under one of the other types of warranty service designated for your product. An optional service offering may be available for purchase at any time upon request. CRUs that are easily installed by you are called "Self-service CRUs." "Optional-service CRUs" are CRUs that may require some technical skill and tools. Installation of Self-service CRUs is your responsibility. You may request that a Service Provider install Optional-service CRUs under one of the other types of warranty service designated for your product. An optional service offering may be available for purchase at any time upon request. CRUs that are easily installed by you are called "Self-service CRUs." "Optional-service CRUs" are CRUs that may require some technical skill and tools. Installation of Self-service CRUs is your responsibility. You may request that a Service Provider install Optional-service CRUs under one of the other types of warranty service designated for your product. An optional service offering may be available for purchase at any time upon request. CRUs that are easily installed by you are called "Self-service CRUs." "Optional-service CRUs" are CRUs that may require some technical skill and tools. Installation of Self-service CRUs is your responsibility. You may request that a Service Provider install Optional-service CRUs under one of the other types of warranty service designated for your product. An optional service offering may be available for purchase at any time upon request. CRUs that are easily installed by you are called "Self-service CRUs." "Optional-service CRUs" are CRUs that may require some technical skill and tools. Installation of Self-service CRUs is your responsibility. You may request that a Service Provider install Optional-service CRUs under one of the other types of warranty service designated for your product. An optional service offering may be available for purchase at any time upon request. CRUs that are easily installed by you are called "Self-service CRUs." "Optional-service CRUs" are CRUs that may require some technical skill and tools. Installation of Self-service CRUs is your responsibility. You may request that a Service Provider install Optional-service CRUs under one of the other types of warranty service designated for your product. An optional service offering may be available for purchase at any time upon request. CRUs that are easily installed by you are called "Self-service CRUs." "Optional-service CRUs" are CRUs that may require some technical skill and tools. Installation of Self-service CRUs is your responsibility. You may request that a Service Provider install Optional-service CRUs under one of the other types of warranty service designated for your product. An optional service offering may be available for purchase at any time upon request. CRUs that are easily installed by you are called "Self-service CRUs." "Optional-service CRUs" are CRUs that may require some technical skill and tools. Installation of Self-service CRUs is your responsibility. You may request that a Service Provider install Optional-service CRUs under one of the other types of warranty service designated for your product. An optional service offering may be available for purchase at any time upon request. CRUs that are easily installed by you are called "Self-service CRUs." "Optional-service CRUs" are CRUs that may require some technical skill and tools. Installation of Self-service CRUs is your responsibility. You may request that a Service Provider install Optional-service CRUs under one of the other types of warranty service designated for your product. An optional service offering may be available for purchase at any time upon request. CRUs that are easily installed by you are called "Self-service CRUs." "Optional-service CRUs" are CRUs that may require some technical skill and tools. Installation of Self-service CRUs is your responsibility. You may request that a Service Provider install Optional-service CRUs under one of the other types of warranty service designated for your product. An optional service offering may be available for purchase at any time upon request. CRUs that are easily installed by you are called "Self-service CRUs." "Optional-service CRUs" are CRUs that may require some technical skill and tools. Installation of Self-service CRUs is your responsibility. You may request that a Service Provider install Optional-service CRUs under one of the other types of warranty service designated for your product. An optional service offering may be available for purchase at any time upon request. CRUs that are easily installed by you are called "Self-service CRUs." "Optional-service CRUs" are CRUs that may require some technical skill and tools. Installation of Self-service CRUs is your responsibility. You may request that a Service Provider install Optional-service CRUs under one of the other types of warranty service designated for your product. An optional service offering may be available for purchase at any time upon request. CRUs that are easily installed by you are called "Self-service CRUs." "Optional-service CRUs" are CRUs that may require some technical skill and tools. Installation of Self-service CRUs is your responsibility. You may request that a Service Provider install Optional-service CRUs under one of the other types of warranty service designated for your product. An optional service offering may be available for purchase at any time upon request. CRUs that are easily installed by you are called "Self-service CRUs." "Optional-service CRUs" are CRUs that may require some technical skill and tools. Installation of Self-service CRUs is your responsibility. You may request that a Service Provider install Optional-service CRUs under one of the other types of warranty service designated for your product. An optional service offering may be available for purchase at any time upon request. CRUs that are easily installed by you are called "Self-service CRUs." "Optional-service CRUs" are CRUs that may require some technical skill and tools. Installation of Self-service CRUs is your responsibility. You may request that a Service Provider install Optional-service CRUs under one of the other types of warranty service designated for your product. An optional service offering may be available for purchase at any time upon request. CRUs that are easily installed by you are called "Self-service CRUs." "Optional-service CRUs" are CRUs that may require some technical skill and tools. Installation of Self-service CRUs is your responsibility. You may request that a Service Provider install Optional-service CRUs under one of the other types of warranty service designated for your product. An optional service offering may be available for purchase at any time upon request. CRUs that are easily installed by you are called "Self-service CRUs." "Optional-service CRUs" are CRUs that may require some technical skill and tools. Installation of Self-service CRUs is your responsibility. You may request that a Service Provider install Optional-service CRUs under one of the other types of warranty service designated for your product. An optional service offering may be available for purchase at any time upon request. CRUs that are easily installed by you are called "Self-service CRUs." "Optional-service CRUs" are CRUs that may require some technical skill and tools. Installation of Self-service CRUs is your responsibility. You may request that a Service Provider install Optional-service CRUs under one of the other types of warranty service designated for your product. An optional service offering may be available for purchase at any time upon request. CRUs that are easily installed by you are called "Self-service CRUs." "Optional-service CRUs" are CRUs that may require some technical skill and tools. Installation of Self-service CRUs is your responsibility. You may request that a Service Provider install Optional-service CRUs under one of the other types of warranty service designated for your product. An optional service offering may be available for purchase at any time upon request. CRUs that are easily installed by you are called "Self-service CRUs." "Optional-service CRUs" are CRUs that may require some technical skill and tools. Installation of Self-service CRUs is your responsibility. You may request that a Service Provider install Optional-service CRUs under one of the other types of warranty service designated for your product. An optional service offering may be available for purchase at any time upon request. CRUs that are easily installed by you are called "Self-service CRUs." "Optional-service CRUs" are CRUs that may require some technical skill and tools. Installation of Self-service CRUs is your responsibility. You may request that a Service Provider install Optional-service CRUs under one of the other types of warranty service designated for your product. An optional service offering may be available for purchase at any time upon request. CRUs that are easily installed by you are called "Self-service CRUs." "Optional-service CRUs" are CRUs that may require some technical skill and tools. Installation of Self-service CRUs is your responsibility. You may request that a Service Provider install Optional-service CRUs under one of the other types of warranty service designated for your product. An optional service offering may be available for purchase at any time upon request. CRUs that are easily installed by you are called "Self-service CRUs." "Optional-service CRUs" are CRUs that may require some technical skill and tools. Installation of Self-service CRUs is your responsibility. You may request that a Service Provider install Optional-service CRUs under one of the other types of warranty service designated for your product. An optional service offering may be available for purchase at any time upon request. CRUs that are easily installed by you are called "Self-service CRUs." "Optional-service CRUs" are CRUs that may require some technical skill and tools. Installation of Self-service CRUs is your responsibility. You may request that a Service Provider install Optional-service CRUs under one of the other types of warranty service designated for your product. An optional service offering may be available for purchase at any time upon request. CRUs that are easily installed by you are called "Self-service CRUs." "Optional-service CRUs" are CRUs that may require some technical skill and tools. Installation of Self-service CRUs is your responsibility. You may request that a Service Provider install Optional-service CRUs under one of the other types of warranty service designated for your product. An optional service offering may be available for purchase at any time upon request. CRUs that are easily installed by you are called "Self-service CRUs." "Optional-service CRUs" are CRUs that may require some technical skill and tools. Installation of Self-service CRUs is your responsibility. You may request that a Service Provider install Optional-service CRUs under one of the other types of warranty service designated for your product. An optional service offering may be available for purchase at any time upon request. CRUs that are easily installed by you are called "Self-service CRUs." "Optional-service CRUs" are CRUs that may require some technical skill and tools. Installation of Self-service CRUs is your responsibility. You may request that a Service Provider install Optional-service CRUs under one of the other types of warranty service designated for your product. An optional service offering may be available for purchase at any time upon request. CRUs that are easily installed by you are called "Self-service CRUs." "Optional-service CRUs" are CRUs that may require some technical skill and tools. Installation of Self-service CRUs is your responsibility. You may request that a Service Provider install Optional-service CRUs under one of the other types of warranty service designated for your product. An optional service offering may be available for purchase at any time upon request. CRUs that are easily installed by you are called "Self-service CRUs." "Optional-service CRUs" are CRUs that may require some technical skill and tools. Installation of Self-service CRUs is your responsibility. You may request that a Service Provider install Optional-service CRUs under one of the other types of warranty service designated for your product. An optional service offering may be available for purchase at any time upon request. CRUs that are easily installed by you are called "Self-service CRUs." "Optional-service CRUs" are CRUs that may require some technical skill and tools. Installation of Self-service CRUs is your responsibility. You may request that a Service Provider install Optional-service CRUs under one of the other types of warranty service designated for your product. An optional service offering may be available for purchase at any time upon request. CRUs that are easily installed by you are called "Self-service CRUs." "Optional-service CRUs" are CRUs that may require some technical skill and tools. Installation of Self-service CRUs is your responsibility. You may request that a Service Provider install Optional-service CRUs under one of the other types of warranty service designated for your product. An optional service offering may be available for purchase at any time upon request. CRUs that are easily installed by you are called "Self-service CRUs." "Optional-service CRUs" are CRUs that may require some technical skill and tools. Installation of Self-service CRUs is your responsibility. You may request that a Service Provider install Optional-service CRUs under one of the other types of warranty service designated for your product. An optional service offering may be available for purchase at any time upon request. CRUs that are easily installed by you are called "Self-service CRUs." "Optional-service CRUs" are CRUs that may require some technical skill and tools. Installation of Self-service CRUs is your responsibility. You may request that a Service Provider install Optional-service CRUs under one of the other types of warranty service designated for your product. An optional service offering may be available for purchase at any time upon request. CRUs that are easily installed by you are called "Self-service CRUs." "Optional-service CRUs" are CRUs that may require some technical skill and tools. Installation of Self-service CRUs is your responsibility. You may request that a Service Provider install Optional-service CRUs under one of the other types of warranty service designated for your product. An optional service offering may be available for purchase at any time upon request. CRUs that are easily installed by you are called "Self-service CRUs." "Optional-service CRUs" are CRUs that may require some technical skill and tools. Installation of Self-service CRUs is your responsibility. You may request that a Service Provider install Optional-service CRUs under one of the other types of warranty service designated for your product. An optional service offering may be available for purchase at any time upon request. CRUs that are easily installed by you are called "Self-service CRUs." "Optional-service CRUs" are CRUs that may require some technical skill and tools. Installation of Self-service CRUs is your responsibility. You may request that a Service Provider install Optional-service CRUs under one of the other types of warranty service designated for your product. An optional service offering may be available for purchase at any time upon request. CRUs that are easily installed by you are called "Self-service CRUs." "Optional-service CRUs" are CRUs that may require some technical skill and tools. Installation of Self-service CRUs is your responsibility. You may request that a Service Provider install Optional-service CRUs under one of the other types of warranty service designated for your product. An optional service offering may be available for purchase at any

					
Semarang	Ruko Thamrin Square Blok C7, Jalan Thamrin No. 5 Semarang, Jawa Tengah	(024) 3581862			
Yogyakarta	Ruko Yag Square Blok B 8 Jalan C. Smanjuntak, Yogyakarta, Jawa Tengah	(0274) 921304			
Surabaya	Jalan Raya Kartini 123B, Surabaya, Jawa Timur	(031) 5670321			
Makassar	Jalan Pengayoman A5 No. 5 Masalle, Pattanrikang, Makassar, Sulawesi Selatan	(0411) 8982691			
Medan	Jalan Raden Saleh No. 69, Medan, Sumatera Utara	(061) 4577019			

- Servis dan suku cadang pengganti akan tersedia untuk produk Anda hingga apabila produk resmi ditarik dari pasar atau masa garansi berakhir, mana pun yang lebih lama. Biaya suku cadang dan jasa akan dikenakan untuk perbaikan setelah berakhirnya masa garansi.

Opsi dan aksesoris Lenovo dimpor ke Indonesia oleh:

- PT. Lenovo Indonesia
- WISMA 46 KOTA BNI LT.19 SUITE 19-05, JL. JEND SUDIRMAN KAV.1 KARET TENGIN, TANAH ABANG KOTA JAKARTA PUSAT

Brazillan Portuguese

Garantia Limitada Lenovo – Aviso ao cliente Sua opção está coberta pela Garantia Limitada Lenovo (LLW) versão L505-0010-02 08/2011.

- Você pode ler a LLW em https://www.lenovo.com/warranty/llw_02. Caso não seja possível exibir a LLW, entre em contato com o escritório ou revendedor Lenovo local para obter uma versão impressa da LLW.
- Para visualizar o Período de Garantia e o Tipo de Serviço de Garantia aplicáveis a sua localização, são os seguintes:

País ou região da garantia de compra	Período	Tipo de Serviço de Garantia
Brasil	1 ano	4. Serviço de atendimento no balcão: no Serviço de Atendimento no balcão, o produto será reparado ou substituído após você entregá-lo por sua própria conta e risco em um centro de assistência técnica designado. Após o produto ser reparado ou substituído, ele será disponibilizado para ser coletado por você. Se você não coletar o produto, o Provedor de Serviços poderá descartá-lo da forma que julgar conveniente, sem nenhuma obrigação junto a você.

Para ver o Período de Garantia e o Tipo de Serviço de Garantia aplicável para outros locais, vá para https://www.lenovo.com/warranty/option

- Para serviços na garantia, consulte a lista de telefones em https://pcsupport.lenovo.com/supportphonest. Os números de telefone estão sujeitos a alterações sem aviso prévio.

Bulgarian

Ограничена гаранция на Lenovo – Забележка за клиента

Опцията ви се покрива от Ограничената гаранция на Lenovo (LLW) версия L505-0010-02 08/2011.

- Možete da pročitate LLW na adresе https://www.lenovo.com/warranty/llw_02. Ako nimate dostup do LLW, se svrhuje se s mestnia ofis ili trgovca na Lenovo, za da poluchite печатна версия na LLW.
- Za da pregledate informacija za garancionija срок и типа garancionio обслужавне, приложимо за вашата опция и местоположение, отидете на: https://www.lenovo.com/warranty/option
- Za garancionio обслужавне проверете в телефонния списък на адресе https://pcsupport.lenovo.com/supportphonest. Телефонните номера подлежат на промена без предизвестие.

Croatian

Ograničeno jamstvo tvrtke Lenovo – napomena kupcima

Vaš je proizvod zaštićen ograničenim jamstvom tvrtke Lenovo (LLW), verzija L505-0010-02 08/2011.

- Jamstvo LLW možete pročitati na adresи https://www.lenovo.com/warranty/llw_02. Ako ne možete vidjeti ograničeno jamstvo tvrtke Lenovo, obratite se lokalnoj podružnici ili prodavaču proizvoda tvrtke Lenovo da biste dobili tiskanu verziju tog jamstva.
- Za prikaz jamstvenog razdoblja i vrste jamstvenog servisa koji vrijede za vaš proizvod i lokaciju obite na adresu https://www.lenovo.com/warranty/option
- Za jamstveni servis pogledajte popis telefonskih brojeva na adresи https://pcsupport.lenovo.com/supportphonest. Telefonski brojevi podložni su promjeni bez prethodne obavijesti.

Czech

Omezená záruka Lenovo – upozornění pro zákazníky Na váš produkt se vztahuje Omezená záruka Lenovo (LLW), verze L505-0010-02 08/2011.

- Podmínky LLW si můžete přečíst na adresе https://www.lenovo.com/warranty/llw_02. Pokud si text LLW nemůžete prohlédnout, vyžádejte si tištěnou verzi do místního zastoupení Lenovo nebo od prodejce.
- Informace o záruční době a typu záručního servisu platné pro váš produkt a region naleznete na adresе https://www.lenovo.com/warranty/option
- Informace o záručním servisu získáte na telefonních číslech uvedených na adresе https://pcsupport.lenovo.com/supportphonest. Telefonní čísla se mohou měnit bez předchozího upozornění.

Danish

Lenovo Begrænset garanti – Bemærkning til kunder Dit udstyr er omfattet af Lenovo Begrænset garanti (LLW) version L505-0010-02 08/2011.

- Du kan læse LLW på https://www.lenovo.com/warranty/llw_02. Hvis du ikke læse LLW, kan du kontakte dit lokale Lenovo-kontor eller den lokale Lenovo-forhandler for at få en trykt version af LLW.
- Du kan se garantierne i den type service, der gælder for dit udstyr, ved at besøge https://www.lenovo.com/warranty/option
- Du kan finde telefonlisten for garantierne ved at besøge https://pcsupport.lenovo.com/supportphonest. Disse telefonnumre kan ændres uden forudgående varsel.

Dutch

Lenovo Beperkte Garantie – Klientenbericht

Voor uw optie geldt de Lenovo Beperkte Garantie (LBG), versie L505-0010-02 08/2011.

- U vindt de LBG op https://www.lenovo.com/warranty/llw_02. Als u de LBG niet kunt weergeven, neemt u contact op met uw plaatselijke Lenovo-kantoor of -dealer om een gedrukte versie van de LBG te verkrijgen.

- Informatie met betrekking tot de garantie die op uw optie en locatie van toepassing is, met inbegrip van de garantieperiodes en het type garantieservice, vindt u op https://www.lenovo.com/warranty/option

- Raadpleeg voor de garantieservice de telefoonlijst op https://pcsupport.lenovo.com/supportphonest. Telefoonnummers kunnen zonder voorafgaande kennisgeving worden gewijzigd.

Finnish

Lenovon rajoitettu takuu – Asiakasilmoitus Lisävarusteisi on Lenovon rajoitettu takuu (LLW) alainen, versio L505-0010-02 08/2011.

- Voit lukea Lenovon rajoitetun takuun (LLW) osoitteessa https://www.lenovo.com/warranty/llw_02. Jos et näe Lenovon rajoitettua takuuta (LLW), otä yhteyttä paikalliseen Lenovo-toimistoosn tai -jälleenmyyjään ja pyydä painettua versio LLW:stä.
- Voit tarkastella lisävarusteeseesi ja sijaintiasi sovellettavaa takuukaikaa ja takuuohjelman lajia osoitteessa https://www.lenovo.com/warranty/option
- Saät takuuohjelmakalvaujia soittamalla sopivaan puhelinnumeroon sivustossa https://pcsupport.lenovo.com/supportphonest. Puhelinnumeroita saatetaan muuttaa ennalla ilmoittamatta.

French

Garantie Lenovo – Notification client

Votre option est couverte par la garantie Lenovo (LLW), version L505-0010-02 08/2011.

- Vous pouvez la consulter à l'adresse https://www.lenovo.com/warranty/llw_02. Si vous n'arrivez pas à afficher la Garantie, prenez contact avec votre distributeur Lenovo ou avec le bureau Lenovo local afin d'en obtenir une version imprimée.
- Pour connaître la période de garantie et le type de service correspondant à votre option, rendez-vous sur https://www.lenovo.com/warranty/option
- Pour le service de garantie, consultez les numéros de téléphone figurant à la page https://pcsupport.lenovo.com/supportphonest. Les numéros de téléphone sont susceptibles d'être modifiés sans préavis.

German

Lenovo Begrenzte Herstellergarantie – Hinweis für Kunden

Ihre Zusatzeinrichtung unterliegt einer begrenzten Herstellergarantie von Lenovo (LLW), Version L505-0010-02 08/2011.

- Sie können die LLW einsehen unter https://www.lenovo.com/warranty/llw_02. Wenn Sie die begrenzte Herstellergarantie nicht anzeigen können, wenden Sie sich an Lenovo oder Ihren Lenovo Reseller vor Ort, um eine gedruckte Version der begrenzten Herstellergarantie zu erhalten.

- Informationen hinsichtlich des Gewährleistungszeitraums und der Art des Gewährleistungsservice für Ihre Zusatzeinrichtung finden Sie unter https://www.lenovo.com/warranty/option
- Die Telefonnummer für den Garantieservice finden Sie in der Telefonliste unter https://pcsupport.lenovo.com/supportphonest. Telefonnummern können jederzeit ohne Vorankündigung geändert werden.

Greek

Περιορισμένη Εγγύηση της Lenovo – Ειδοποίηση πελατών

Η πρόσθετη ασυκεία σας καλύπτεται από την Περιορισμένη Εγγύηση της Lenovo (LLW), εκδοχή L505-0010-02 08/2011.

- Μπορείτε να διαβάσετε την Περιορισμένη Εγγύηση της Lenovo (LLW) στον δικτυακό τόπο https://www.lenovo.com/warranty/llw_02. Εάν δεν μπορείτε να próbáσετε την Περιορισμένη Εγγύηση της Lenovo (LLW), επικοινωνήστε με τα τοπικά γραφεία ή τον μεταπωλητή της Lenovo, για να λάβετε μια έντυπη εκδοχή της Περιορισμένης Εγγύησης της Lenovo (LLW).
- Για να ελέγξετε την Περίοδο εγγύησης και τον τύπο των υπηρεσιών εγγύησης που ισχύουν για την πρόσθετη ασυκεία σας, και την τοποθεσία σας, μεταβείτε στον δικτυακό τόπο https://www.lenovo.com/warranty/option
- Για υπηρεσίες εγγύησης, συμβουλευτείτε τον τηλεφωνικό κατάλογο στον δικτυακό τόπο https://pcsupport.lenovo.com/supportphonest. Οι αριθμοί τηλεφώνου υπόκεινται σε αλλαγή χωρίς ειδοποίηση.

Hungarian

Lenovo korlátozott Jótállás – vásárlói tájékoztató Az eszközére a Lenovo korlátozott jótállás (LLW) L505-0010-02 08/2011 verziójának feltételei vonatkoznak.

- A Lenovo korlátozott jótállása a következő helyen tekinthető meg: https://www.lenovo.com/warranty/llw_02. Ha nem tudja megtekinteni a Lenovo Korlátozott Jótállást, akkor lépjen kapcsolatba a Lenovo helyi képviselőivel vagy viszonteladójával, és kérje a Lenovo Korlátozott Jótállás nyomtatott példányát.
- Az eszközre és a tartozékokra helyére érvényes jótállási időszak, valamint a jótállási szolgáltatás típusának megtekintéséhez látogasson el a következő címre: https://www.lenovo.com/warranty/option
- A jótállási szolgáltatás elérhetőségével kapcsolatban tekintse meg a telefonszámok listáját: https://pcsupport.lenovo.com/supportphonest. A telefonszámok bejelentés nélkül megváltozhatnak.

Italian

Garanzia limitata Lenovo – Avviso per il cliente L'opzione è coperta dalla Garanzia Limitata Lenovo (LLW, Lenovo Limited Warranty), versione L505-0010-02 08/2011.

- Puoi leggere la LLW alla pagina https://www.lenovo.com/warranty/llw_02. Se non è possibile visualizzarla la dichiarazione LLW, contatta l'ufficio locale Lenovo o il rivenditore per ottenerne una versione stampata.
- Per visualizzare il periodo di garanzia e il tipo di servizio di garanzia applicabile alla tua opzione e ubicazione, vai alla pagina https://www.lenovo.com/warranty/option
- Per il servizio di garanzia, consultare l'elenco dei numeri telefonici alla pagina https://pcsupport.lenovo.com/supportphonest. I numeri di telefono sono soggetti a modifiche senza preavviso.

Japanese

Lenovo 保証規定 – 安全上の注意 オプションには、Lenovo 保証規定 (LLW) L505-0010-02 08/2011 版の条件が適用されます。

- LLW は以下の URL で読むことができます。 https://www.lenovo.com/warranty/llw_02. LLW を参照できないときは、最寄りの Lenovo オフイスまたは販売店に連絡し印刷版の LLW を入手してください。
- 保証期間および保証サービスの種類など、ご使用のオプションと地域に適用される保証については、以下の URL を参照してください。 https://www.lenovo.com/warranty/option
- 保証サービスについては、以下の URL で電話番号リストを参照してください。 https://pcsupport.lenovo.com/supportphonest. 電話番号は、予告なくに変更される場合があります。

Korean

Lenovo 제한 보증 – 고객 주의사항 본 옵션에는 Lenovo 제한 보증, 버전 L505-0010-02 08/2011)의 조항이 적용됩니다.

- 다음에서 LLW 를 확인할 수 있습니다. https://www.lenovo.com/warranty/llw_02. LLW 를 확인할 수 없는 경우 현지 Lenovo 지점 또는 대리점에 문의하여 LLW 의 인쇄된 버전을 받으십시오.
- 본 옵션 및 기타 적용되는 보증 기간 및 보증 서비스 유형 등 사용자 지침서에 해당하는 정보는 다음을 참고하십시오。 https://www.lenovo.com/warranty/option
- 보증 서비스에 관해서는 다음 전화번호 목록을 참고하십시오。 https://pcsupport.lenovo.com/supportphonest. 전화 번호는 별도의 공지 없이 변경될 수 있습니다.

Norwegian

Lenovos garantibetingelser – Kundemerknad Alternativet dekkes av betingelsene i Lenovos garantibetingelser (LLW), versjon L505-0010-02 08/2011.

- Du kan lese garantibetingelsene på https://www.lenovo.com/warranty/llw_02. Hvis du ikke kan vise garantibetingelsene, må du kontakte ditt lokale Lenovo-kontor eller forhandleren for å få en trykt versjon.
- Hvis du vil se garantiperioden og typen garantitjeneste som gjelder for ditt alternativ og sted, kan du gå til https://www.lenovo.com/warranty/option
- Hvis du har spørsmål om garantitjeneste, ser du i telefonlisten på https://pcsupport.lenovo.com/supportphonest. Telefonnumrene kan bli endret uten forvarsel.

Polish

Ograniczona Gwarancja Lenovo – uwaga dla klientów Twoja opcja jest objęta warunkami ograniczonej gwarancji Lenovo (OGL) w wersji L505-0010-02 08/2011.

- Z warunkami OGL można się zapoznać pod adresem https://www.lenovo.com/warranty/llw_02. Jeśli nie można wyświetlić LLW, należy skontaktować się z miejscowym biurem Lenovo lub z resellerem w celu uzyskania wersji drukowanej.

- Aby sprawdzić okres gwarancyjny i typ serwisu gwarancyjnego mający zastosowanie do Twojej opcji i lokalizacji, skorzystaj ze strony https://www.lenovo.com/warranty/option
- Lista telefonów do osób odpowiedzialnych za serwis gwarancyjny znajduje się pod adresem https://pcsupport.lenovo.com/supportphonest. Numery telefonów mogą ulec zmianie bez powiadomienia.

Portuguese

Garantia Limitada da Lenovo – Aviso ao Cliente A sua opção está abrangida pela Garantia Limitada da Lenovo (LLW), versão L505-0010-02 08/2011.

- Podê ler a LLW em https://www.lenovo.com/warranty/llw_02. Se não conseguir visualizar a LLW, contacte o seu representante ou revendedor local da Lenovo para obter uma versão impressa da LLW.
- Para visualizar o Período de Garantia e o Tipo de Serviço de Garantia aplicáveis a sua opção e localização, aceda a https://www.lenovo.com/warranty/option
- Para contactar o serviço de garantia, consulte a lista telefónica em https://pcsupport.lenovo.com/supportphonest. Os números de telefone indicados estão sujeitos a alteração sem aviso prévio.

Romanian

Garantia limitată Lenovo – Notificare pentru clienți Opțiunea dvs. este acoperită de termenii din Garanția limitată Lenovo (GLL), versiunea L505-0010-02 08/2011.

- Puteți citi GLL la https://www.lenovo.com/warranty/llw_02. Dacă nu puteți vizualiza GLL, contactați reprezentanța locală Lenovo sau reseller-ul pentru a obține gratuit o versiune imprimată a GLL.
- Pentru a vizualiza perioada de garanție și tipul de servicii de garanție care se aplică în cazul opțiunii și locației dvs., consultați https://www.lenovo.com/warranty/option
- Pentru service-ul în garanție, consultați lista de telefoane la https://pcsupport.lenovo.com/supportphonest. Numerele de telefon pot fi modificate fără notificare.

Russian

Уведомление для клиентов об Ограниченной гарантии Lenovo

На ваш комплект поставки распространяется действие Ограниченной гарантии Lenovo (LLW) версии L505-0010-02 08/2011.

- Вы можете ознакомиться с условиями и положениями LLW на веб-сайте https://www.lenovo.com/warranty/llw_02. Если вы не можете просмотреть LLW, то распечатанную версию LLW можно получить в местном представительстве Lenovo или у вашего дилера.
- Информацию о гарантии, примененной к вашему комплекту поставки, включая гарантийный период и тип гарантийного обслуживания, смотрите в разделе https://www.lenovo.com/warranty/option
- Для получения гарантийного обслуживания обращайтесь по телефону на веб-сайте https://pcsupport.lenovo.com/supportphonest. Номера телефонов могут быть изменены без уведомления.

Simplified Chinese

Lenovo 有限保証 – 客戶声明
Lenovo 有限保証 (LLW) L505-0010-02 08/2011 版本涵盖您选择的产品。

- 您可以通过以下网址阅读 LLW: https://www.lenovo.com/warranty/llw_02. 如果无法查看 LLW, 请联系您当地的 Lenovo 办事处或经销商, 索取 LLW 的印刷版本。
- 若要查看您选择的产品和位置所适用的保修期和保修服务类型, 请转到 https://www.lenovo.com/warranty/option
- 有关保修服务, 请通过以下网址查阅电话号码列表: https://pcsupport.lenovo.com/supportphonest. 电话号码可能会有更改, 恕不另行通知。

https://pcsupport.lenovo.com/supportphonest. 电话号码可能会有更改, 恕不另行通知。

Slovak

Obmedzená záruka spoločnosti Lenovo – Vyhlasenie pre zákazníkov

Na váš zariadenie sa vzťahuje obmedzená záruka spoločnosti Lenovo (LLW) v verzii L505-0010-02 08/2011.

- Text obmedzenej záruky spoločnosti Lenovo (LLW) si môžete prečítať na adrese https://www.lenovo.com/warranty/llw_02. Ak záruku LLW neviete zobraziť, kontaktujte miestne zastúpenie spoločnosti Lenovo alebo jej predajcu a požiadajte o tlačidnú verziu záruky LLW.
- Informácie o záručnej lehote a type záručného servisu, ktoré sa vzťahujú na váš zariadenie a polohu, získate na adrese https://www.lenovo.com/warranty/option
- V prípade záujmu o záručný servis volajte na čísla uvedené v telefónoch zozname na adrese https://pcsupport.lenovo.com/supportphonest. Telefónne čísla môžu byť zmenené bez predchádzajúceho upozornenia.

Slovenian

Omejena garancija Lenovo – obvestilo za stranke

Za vašo možnost velja omejena garancija podjetja Lenovo (LLW), različica L505-0010-02 08/2011.

- Garancijo LLW si lahko preberete na naslovu https://www.lenovo.com/warranty/llw_02. Če si ne morete ogledati omejene garancije Lenovo (LLW), se obrnite na lokalno pisarno Lenovo ali prodajalca, kjer boste dobili natisnjeno različico.
- Za ogled garancijskega roka in vrste garancijske storitve, ki velja za vašo možnost in lokacijo, obiščite spletno mesto https://www.lenovo.com/warranty/option
- V zvezi z garancijo glejte seznam telefonskih števil na naslovu https://pcsupport.lenovo.com/supportphonest. Pridržujemo si pravico do sprememb telefonskih števil brez prejšnjega obvestila.

Spanish

Garantía limitada de Lenovo – Aviso para el cliente La opción está cubierta por la garantía limitada de Lenovo (LLW), versión L505-0010-02 08/2011.

- Puede leer la LLW en https://www.lenovo.com/warranty/llw_02. Si no puede ver la LLW, comuníquese con la oficina local de Lenovo o el revendedor para obtener una versión impresa de LLW.
- El periodo de garantía y el tipo de servicio de garantía aplicable para su ubicación son los siguientes:

País o región de adquisición de la garantía	Período	Tipo de servicio de garantía
España	1 año	1. Servicio de Unidad reemplazable por el cliente ("CRU")
Argentina, Chile, Colombia, Perú, Venezuela, Ecuador, Bolivia, Uruguay, Paraguay, México	1 año	1. Servicio de Unidad reemplazable por el cliente ("CRU") o 4. Servicios centralizados

- Para ver el periodo de garantía y el tipo de servicio de garantía aplicable para otras ubicaciones, vaya a https://www.lenovo.com/warranty/option
- Para solicitar servicio de garantía, consulte la lista de teléfonos en https://pcsupport.lenovo.com/supportphonest. Estos números de teléfono están sujetos a cambio sin previo aviso.

Swedish

Lenovos begränsade garanti – Kundinformation Ditt val omfattas av de begränsade Lenovo-garantin (LLW) version L505-0010-02 08/2011.

- Du kan läsa LLW-garantitexten på https://www.lenovo.com/warranty/llw_02. Om du inte kan visa LLW-garantitexten kan du kontakta ditt lokala Lenovo-kontor eller din återförsäljare och be om en tryckt version av LLW-garantitexten.
- Om du vill se information om garantitiden och typen av garantitjänst som gäller för ditt tillval och din plats kan du besöka https://www.lenovo.com/warranty/option
- Om du behöver garantiservice kan du titta i listan med telefonnumren på https://pcsupport.lenovo.com/supportphonest. Telefonnumren kan komma att ändras utan att detta meddelas i förväg.

Traditional Chinese

Lenovo 有限保固 – 客戶注意事項 您的運轉配備在 Lenovo 有限保固 (LLW) 條款涵蓋範圍內，版本為 L505-0010-02 08/2011。

- 您可從下列位置閱讀 LLW: https://www.lenovo.com/warranty/llw_02. 如果無法檢視 LLW, 請聯絡您當地的 Lenovo 辦公室或經銷商, 以取得 LLW 的印刷版本。
- 如果要檢視您的運轉配備和在位置所適用的保固期限和保固服務類型, 請前往 https://www.lenovo.com/warranty/option
- 如需保固服務, 請多撥電話號碼。網址為 https://pcsupport.lenovo.com/supportphonest. 電話號碼若有變更恕不另行通知。

Turkish

Lenovo Sınırlı Garanti – Müşteri Bildirimi Belirli donatılar, Lenovo Uluslararası Garanti Bildirimi L505-0010-02 08/2011 sürümüne kapsamlıdır.

- LLW belgesi için su adresine gidin: https://www.lenovo.com/warranty/llw_02. LLW belgesini görüntüleyemezseniz, yerel Lenovo ofisine ya da yetkili satıcınıza başvurarak LLW belgesinin yazılı bir kopyasını edinin.
- Belirli dedijiniz seçenek ve konuma uygun Garanti Süresini ve Garanti Hizmetinin Tipini görüntülemek için su adrese gidin: https://www.lenovo.com/warranty/option
- Garanti hizmet için, su adreste belirtilen telefon listesine bakın: https://pcsupport.lenovo.com/supportphonest. Telefon numaraları önceden bildirilmeden değiştirilebilir.

Ukrainian

Заявлення для користувачів щодо обмеженої гарантії Lenovo

На ваш пристрій поширюється обмежена гарантія Lenovo версії L505-0010-02 08/2011.

- Ознайомитися з нею можна, перейшовши за посиланням https://www.lenovo.com/warranty/llw_02. Якщо не вдається переглянути LLW, зверніться до локального офісу Lenovo або до торгового посередника, який надасть вам роздруковану версію LLW.
- Щоб дізнатися про те, який гарантійний термін або тип гарантійного обслуговування передбачено для цього пристрою та вашого розташування, перейдіть за посиланням https://www.lenovo.com/warranty/option
- З питань гарантійного обслуговування звертайтеся за телефонними номерами, наведеними на сайті https://pcsupport.lenovo.com/supportphonest. Номери телефонів можуть змінюватися без попереднього повідомлення.

Thai

การรับประกันที่มีขอบเขตจำกัด Lenovo – ประกาศสำหรับผู้ถือ อุปกรณ์บางตัวที่รวมอยู่ในชุดอุปกรณ์ของคุณจะได้รับการรับประกันโดย Lenovo (LLW) รุ่นที่ L505-0010-02 08/2011

- คุณสามารถอ่าน LLW ได้ที่ https://www.lenovo.com/warranty/llw_02. หากดูข้อมูล LLW ไม่สามารถดูได้ กรุณาติดต่อตัวแทน Lenovo ที่ใกล้คุณเพื่อขอรับเอกสาร LLW ที่พิมพ์ไว้
- หากต้องการทราบข้อมูลเพิ่มเติมเกี่ยวกับระยะเวลาการรับประกันและบริการที่ครอบคลุม โปรดไปที่ https://www.lenovo.com/warranty/option
- หากต้องการขอรับบริการ ขอความช่วยเหลือ หรือข้อมูลเพิ่มเติม โปรดไปที่ https://pcsupport.lenovo.com/supportphonest. หมายเลขโทรศัพท์อาจมีการเปลี่ยนแปลงโดยไม่ต้องแจ้งให้ทราบ

Lenovo product service information of countries and regions

Lenovo product service information for Taiwan 委製商/進口商名稱：(商南商聯想股份有限公司台灣分公司 進口商地址：台北市中山區北安路 780 號 7 樓 進口商電話：0800-000-702 (代表處)

Lenovo product service information for Turkey Telefon numaraları: 444 0 426 (sabit hatlardan ücretsiz)

Compliance information

The latest compliance information is available at: https://www.lenovo.com/us/en/compliance

European Union conformity – for Class B products that do not have any models with wireless devices

This product is in conformity with the protection requirements of EU Council Directive 2014/30/EU on the approximation of the laws of the Member States relating to electromagnetic compatibility.

Lenovo cannot accept responsibility for any failure to satisfy the protection requirements resulting from a non-recommended modification of the product, including the installation of option cards from other manufacturers. This product has been tested and found to comply with the limits for Class B equipment according to European Standards harmonized in the Directives in compliance. The Class B requirements for equipment are intended to offer adequate protection to broadcast services within residential environments.

Lenovo (Slovakia), Landererova 12, 811 09 Bratislava, Slovakia



European Union conformity – German Class B compliance statement for products that do not have any models with wireless devices

Hinweis zur Einhaltung der Klasse B zur elektromagnetischen Verträglichkeit

Dieses Produkt entspricht den Schutzanforderungen der EU-Richtlinie zur elektromagnetischen Verträglichkeit Angleichung

der Rechtsvorschriften über die elektromagnetische Verträglichkeit in den EU-Mitgliedsstaaten und hält die Grenzwerte der Klasse B der Norm gemäß Richtlinie. Um dieses sicherzustellen, sind die Geräte wie in den Handbüchern beschrieben zu installieren und zu betreiben. Des Weiteren dürfen auch nur von der Lenovo empfohlene Kabel angeschlossen werden. Lenovo übernimmt keine Verantwortung für die Einhaltung der Schutzanforderungen, wenn das Produkt ohne Zustimmung der Lenovo verändert bzw. wenn Erweiterungskomponenten von Fremdherstellern ohne Empfehlung der Lenovo gesteckt/eingebaut werden. Zulassungsbescheinigung laut dem Deutschen Gesetz über die elektromagnetische Verträglichkeit von Betriebsmitteln, EMVG vom 20. Juli 2007 (früher Gesetz über die elektromagnetische Verträglichkeit von Geräten), bzw. der EU Richtlinie 2014/30/EU der EU Richtlinie 2014/53/EU Artikel 3.1b), für Geräte der Klasse B. Dieses Gerät ist berechtigt, in Übereinstimmung mit dem Deutschen EMVG das EG-Konformitätszeichen - CE - zu führen. Verantwortlich für die Konformitätserklärung nach Paragraf 5 des EMVG ist die Lenovo (Deutschland) GmbH, Meitnerstr. 9, D-70563 Stuttgart.

Supplemental information for the Eurasian Union for EAC-certified products

Назначение: Данный аксессуар предназначен для использования с персональными компьютерами, мобильными устройствами, для личного и служебного использования.

Изготовитель:
Lenovo ПЦ ХК Лимитед, 23/Ф Линколн Хаус, Тайку Пэйиз 979 Кингз Роуд, Куарри Бай, Гонкон