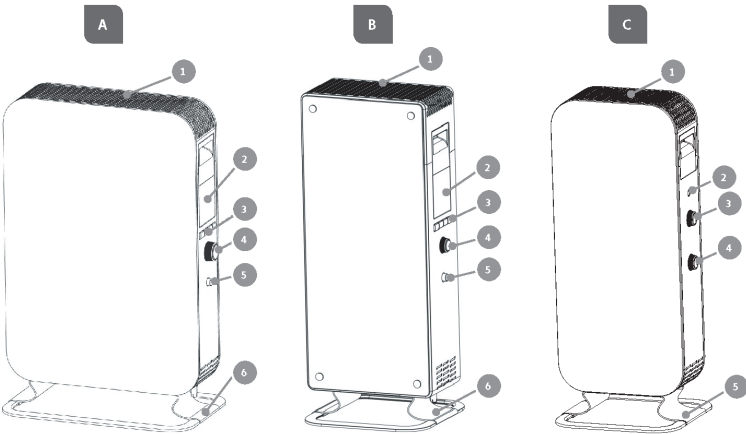


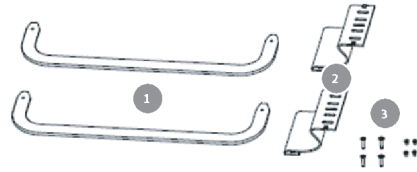


Mill Gentle Air oil filled radiator illustrations

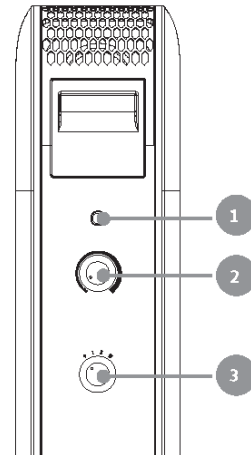
1. DESCRIPTION OF THE HEATER



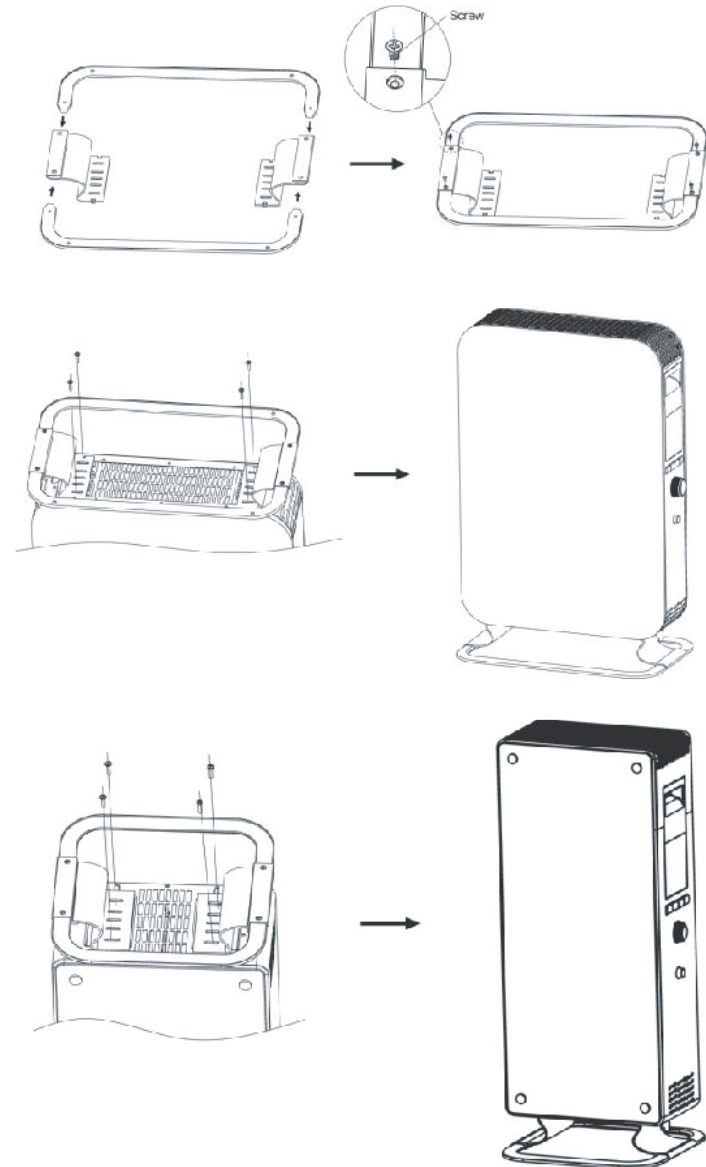
2. PARTS



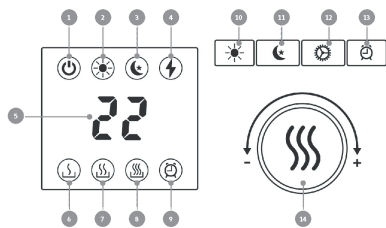
4. INSTRUCTION MECHANICAL THERMOSTAT



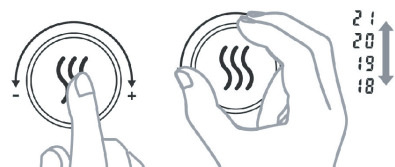
3. ASSEMBLY



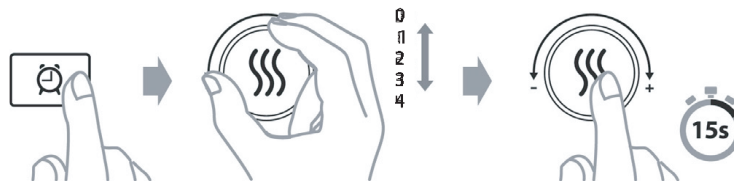
5. INSTRUCTIONS DAY/NIGHT THERMOSTAT



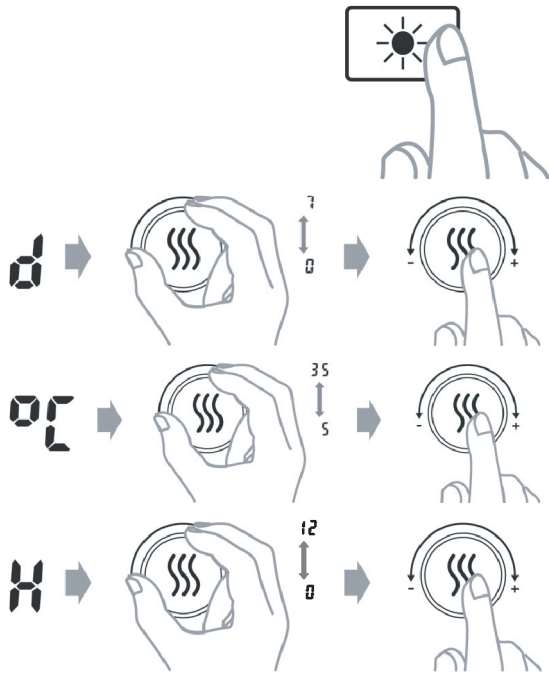
6. USAGE DAY/NIGHT THERMOSTAT



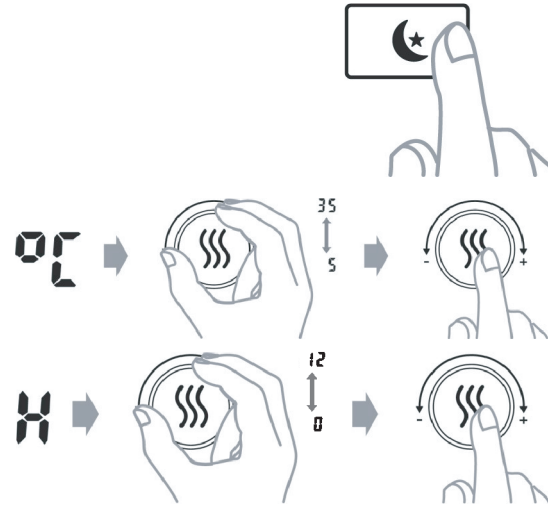
7. TIMER FUNCTION



8. HOW TO ACTIVATE DAYTIME SETBACK



9. HOW TO ACTIVATE NIGHTTIME SETBACK



10. CHANGE SETBACK TEMPERATURE — DAYTIME



11. CHANGE SETBACK TEMPERATURE — NIGHTTIME



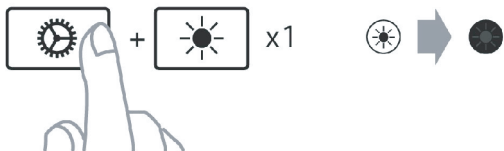
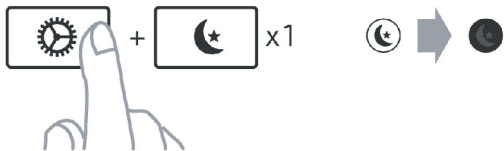
12. CHANGE NUMBER OF HOURS — DAYTIME



13. CHANGE NUMBER OF HOURS — NIGHTTIME



14. CANCEL (SKIP) SETBACK PERIOD



15. DELETE A SETBACK PROGRAM



17. RESETTING THE HEATER



16. TEMPERATURE CALIBRATION

