

# PHILIPS

IPL hair removal device

Lumea Prestige

With SenseIQ technology

Body and face

With SmartSkin sensor

Both cordless and corded use



BRI950/00



## Enjoy 6 months of hair-free smooth skin\* 2 intelligent attachments – for optimal results

Philips Lumea Prestige with SenseIQ technology is our most effective IPL. Designed for convenient treatment at home, Lumea's intelligent attachments perfectly fit every curve of your body and adapt programs tailored for each body area.

### Long-lasting smooth skin with Lumea IPL technology

- Expert IPL technology at-home, developed with dermatologists
- Proven gentle and effective treatment
- Suitable for a wide range of hair and skin types
- SenseIQ technology for personalized hair removal
- Use cordless or corded

### Professional IPL treatment for your body's areas

- Intelligent attachments adapt programs for each body area
- Body attachment with curved-in design
- Precision face attachment with extra filter

### Maximum freedom, minimum hassle

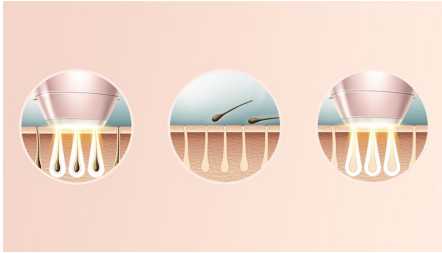
- With SmartSkin sensor
- The Lumea IPL app. With you every step of the way
- No replacement parts, no hidden costs



[asimpleswitch.com](http://asimpleswitch.com)

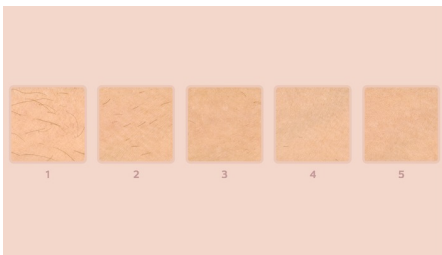
# Highlights

## Lumea prevents hair regrowth\*



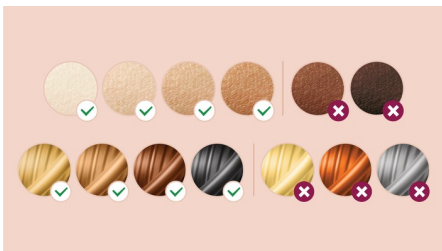
IPL stands for Intense Pulsed Light. Philips Lumea applies gentle pulses of light to the hair root, putting the follicle into a resting phase. As a consequence, the amount of hair your body grows gradually decreases. Repeating the treatment leaves your skin beautifully hair free and touchably smooth. Treatment to prevent hair regrowth is safe and gentle, even on sensitive areas. Philips Lumea is clinically tested and developed with dermatologists for easy and effective treatment, from the comfort of your own home.

## Proven effectiveness



Objective studies show up to 92% hair reduction after three treatments\*\*. Carry out the first four treatments every two weeks, and the next eight treatments every four weeks. After 12 treatments you can enjoy six months of hair-free smooth skin\*.

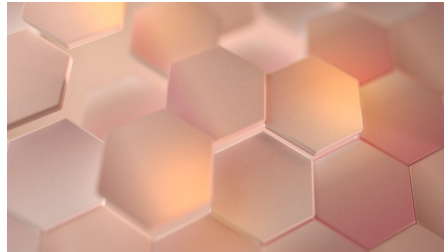
## Suitable hair and skin types



Philips Lumea Prestige is effective on a wide range of hair and skin types. It works on naturally dark blonde, brown and black hair and on skin tones from very white to dark brown. IPL needs contrast between the pigment in the hair color and the pigment in

the skin tone, therefore (as with other IPL-based treatments) Lumea cannot be used to treat white, grey, light blonde or red hair. And is not suitable for very dark skin.

## SenseIQ technology



Senses. Lumea's SmartSkin sensor detects your skin tone and indicates the most comfortable light setting for you. Adapts. Intelligent attachments adapt programs tailored for each body area. Cares. Co-developed with dermatologists and inspired by you for gentle, long-lasting hair removal, even on sensitive areas\*\*\*.

## Treatment of body areas



Your body is unique. And its skin, curves and contours should be treated uniquely too. Lumea's total-body attachments are shaped to perfectly fit every curve, and will adapt programs tailored to each body area. Treatment windows are designed to maximize contact with your skin to ensure light doesn't escape, enabling effective and gentle treatments even on delicate or sensitive areas.

## Body attachment



The intelligent body attachment has our largest treatment window at 4.1 cm<sup>2</sup> so it's perfect for a fast treatment on larger body areas like legs, arms and stomach. The curved-in design closely follows your body's contours for maximum skin contact. Click on the attachment it adapts a tailored program specifically for your body area. 83% of women satisfied with hair reduction on legs\*\*\*\*.

## Face attachment



The face attachment has been thoughtfully designed to have a small, flat 2 cm<sup>2</sup> window so you can effectively and gently treat hair on your face. Ideal for your upper lip, chin or jawline, the attachment also has an extra filter integrated within. When added to the device, the intelligent attachment automatically adapts the light treatment for your face. 84% of women satisfied with hair reduction on face\*\*\*\*.



[asimpleswitch.com](https://www.asimpleswitch.com)

## Philips Green Logo

Philips Green Products can reduce costs, energy consumption and CO<sub>2</sub> emissions. How? They offer a significant environmental improvement in one or more of the Philips Green Focal Areas – Energy efficiency, Packaging, Hazardous substances, Weight, Recycling and disposal and Lifetime reliability.

# Specifications

## Application areas

**Body areas:** Arms, Legs, Stomach

**Face areas:** Chin, Upper lip, Jawline

**Sensitive areas:** Armpits, Bikini

## Technical specs. attachments

**Body treatment attachment:** Window size: 4.1 cm<sup>2</sup>, Shape: Convex curved, Tailored treatment for body

**Face treatment attachment:** Window size: 2 cm<sup>2</sup>, extra filter, Shape: Flat, Tailored treatment for face

## Application mode

**Slide and Flash:** For quick application

**Stamp and Flash:** For treatment on small areas

**Corded / cordless use:** Both cordless and corded use

## Safety and adjustable settings

**5 light energy settings:** Adjustable to your skin type

**SmartSkin sensor:** The right setting on demand

**Integrated safety system:** Prevent unintentional flashing

**Integrated UV filter:** Protects skin from UV light

**Skin Tone sensor:** Detects your skin tone

## Application time

**Armpit:** 2,5 min

**Face areas:** 1,5 min

**Bikini line:** 2 min

**Lower legs:** 8,5 min

## Technical specifications

**High performance lamp:** Delivers >250.000 flashes\*\*\*\*\*

## Power

**Voltage:** 100-240 V

## Items included

**Adapter:** 19.5V / 4000mA

**Instructions for use:** User manual

**Storage:** Luxurious pouch

## Service

**Warranty:** 2 years global warranty



\* Median hair reductions after 12 treatments: 78% on legs, 64% on bikini, 65% on armpits

\*\* Measured on legs, after 3 treatments, 27 out of 55 women reach 92% or higher results

\*\*\* When following the treatment schedule

\*\*\*\* Study conducted in Netherlands and Austria, 56 women, after 3 treatments on armpits, bikini, legs, after 2 treatments on face

\*\*\*\*\* The lamp lifetime does not extend the Philips 2 years worldwide warranty