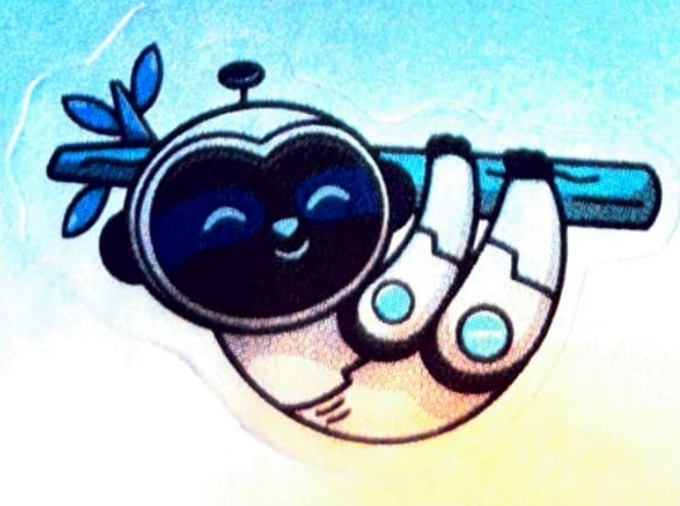
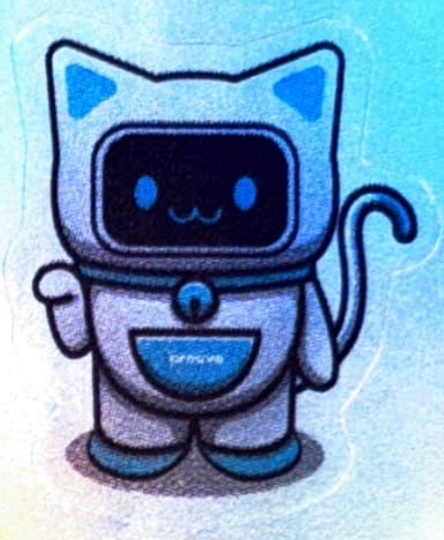


prove



HOODMAN

Power Bank 20W

10000mAh



User Manual

prove

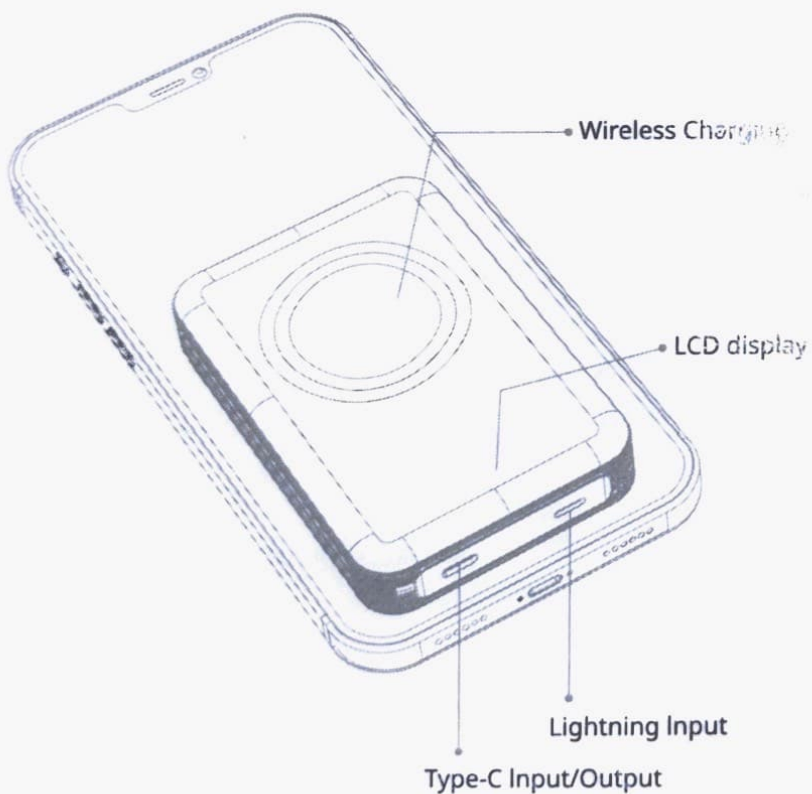
Manual

1. Can be used as a magnetic wireless charging mobile power, compatible with iPhone 12 or more series of cell phones;
2. Can be use as ordinary wireless charging mobile power, compatible with all cell phones supporting Qi protocol;
3. Can be used as a portable mobile power, small and lightweight, easy to carry, support 99% of cell phone charging.

Features

- 15W magnetic wireless quick charging;
- PD 20W quick charging;
- Sync input and output for portable charging;
- Accurate LED power indicators;
- High Quality safe polymer battery.

Product diagram:



Specifications

Name: Proove Hoodman

Capacity: 10000 mAh

Type-C Input: 5V-3A, 9V-2A

Lightning Input: 5V-2A, 9V-2A

Type-C Output: 5V-3A, 9V-2.22A, 12V-1.67A (20W Max)

Wireless Output: 15W

Battery: Polymer

Working temperature: 0 C - 55 C

Power Indicators

The indicators show the remaining power of this device



100% Power



0% Power

The LCD display will go from 100% to 0%. when it's around 0%, means the power is low, please recharge it

Pre-use and Warnings

- If the device is not used for a long time, please charge it at least every 3 months.
- It might produce slight heat during charging, which is normal as long as it's below 55 C;
- Always keep this device dry and do not clean it with chemical agents;
- Go green with Proove and recycle this device at designated place;
- Children must use it under the guidance of adults;
- Do not crash, disassemble, impale or put this device into humid conditions;
- Do not use it to charge devices with incompatible current and voltage, which will cause fire or other problems.